



AMETHYST  
INFRASTRUCTURE  
MANAGEMENT



redbrick  
COMMUNICATIONS

# Adaptation Visioning & Goals

Workshop #4

Collingwood Climate Adaptation Plan

April 15, 2026



# Agenda

▶	Introduction	<b>01</b>
▶	Project Overview and Where We Are	<b>02</b>
▶	Climate Refresher	<b>03</b>
▶	Outcomes of Risk Assessment	<b>04</b>

▶	Activity 1: Vision for Climate Adaptation	<b>05</b>
▶	Activity 2: Equitable Adaptation	<b>06</b>
▶	Activity 3: Adaptation Objectives	<b>07</b>
▶	Wrap-up & Next Steps	<b>08</b>

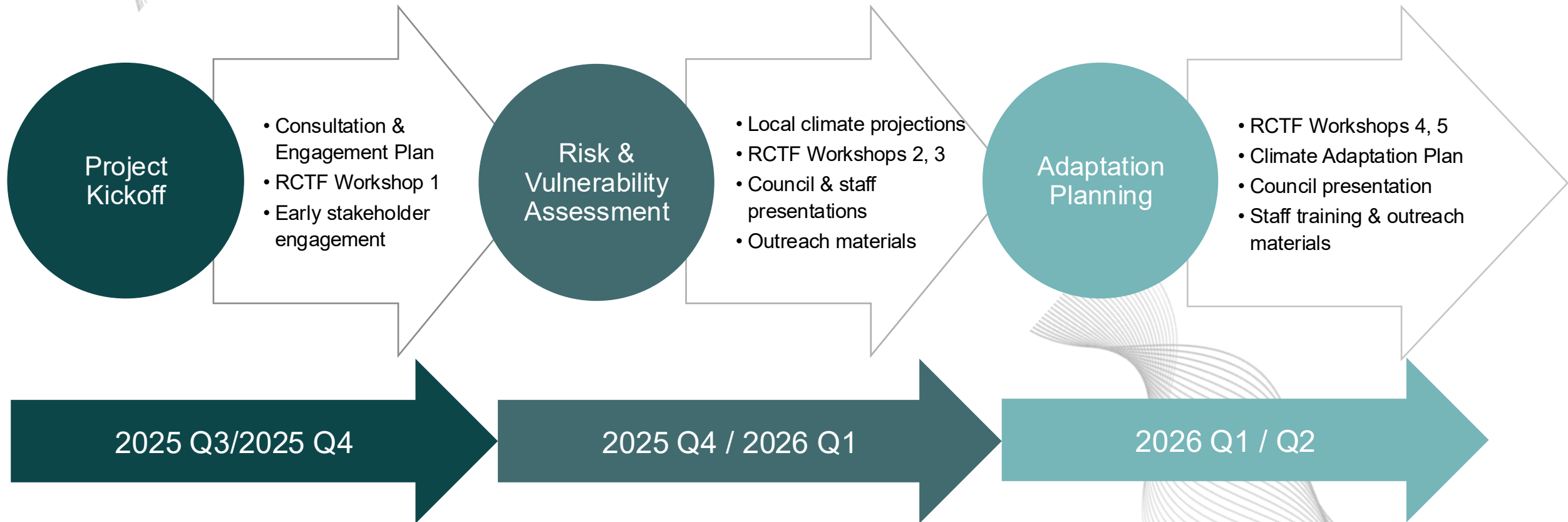
# Land Acknowledgement

For more than 15,000 years the First Nations walked upon, and cared for, the lands we now call home: Anishinabek, Haudenosaunee, Ojibwe, and many others who cared for their families and communities, the way we now seek to care for ours.

The Town of Collingwood acknowledges the Lake Simcoe-Nottawasaga Treaty of 1818 and respects all of the Nation-to-Nation agreements that have formed relationships with the original inhabitants of Turtle Island; the reality of our shared history; the current contributions of Indigenous people within our community and seeks to continue empowering expressions of pride amongst all of the diverse stakeholders in this area.

We seek to do better, to continue to recognize, learn, and grow, in friendship and community, Nation-to-Nation.

# Key Deliverables & Schedule



# A Refresher: What is Climate Adaptation

## Mitigation

Action to reduce emissions that cause climate change

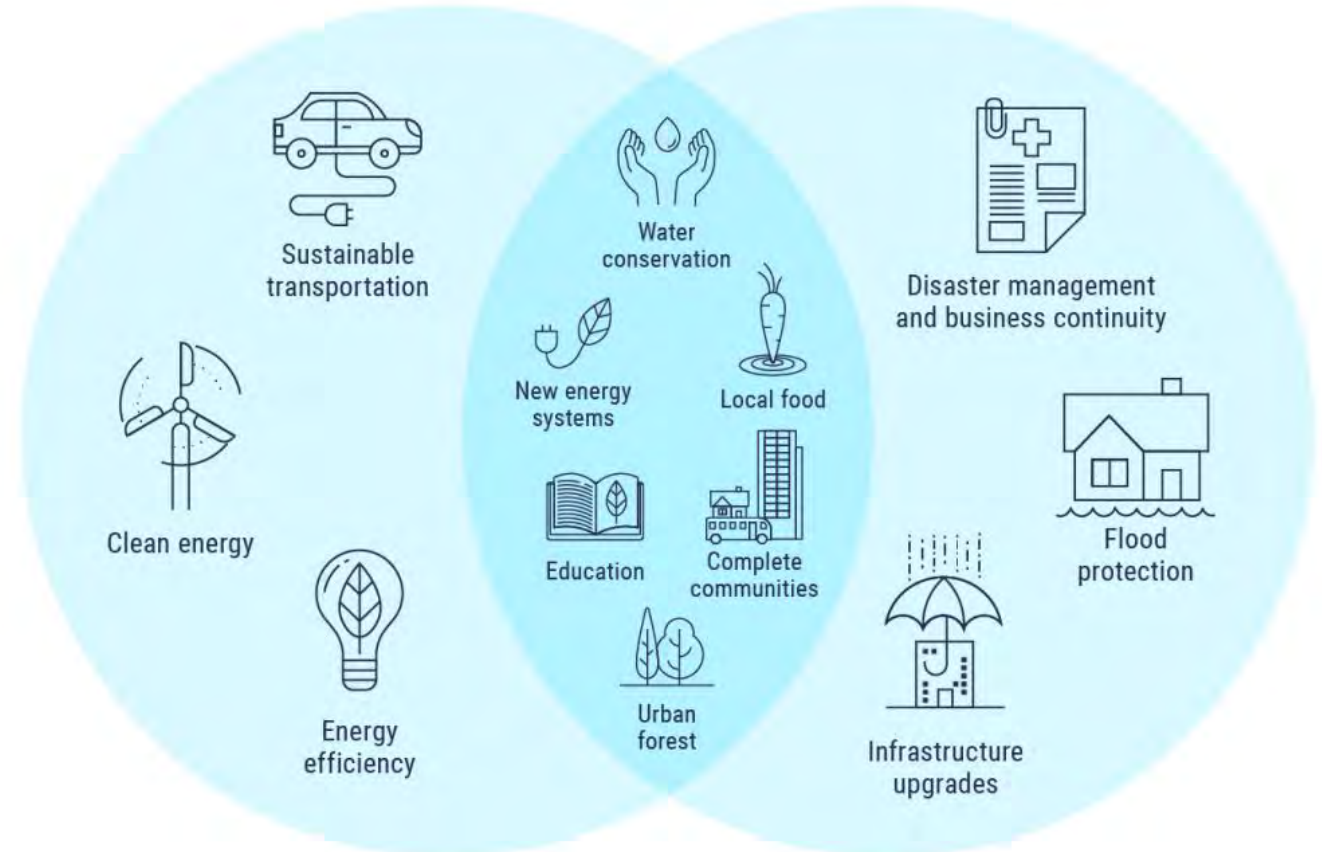
## Adaptation

Action to manage the risks of climate change impacts

**Mitigation:** how we reduce our impact.

**Adaptation:** How we respond to the climate's impact on us.

**Co-Benefits:** Actions that provide both mitigation and adaptation benefits.



# Refresher: What is Climate Adaptation



Infrastructure Upgrades and Design Standards



Policy, Planning and Regulatory Updates



Emergency Planning and Response Enhancement



Education, Capacity Building, and Partnerships



Maximizing Economic and Ecological Opportunities

# The Risk Assessment: Consequence Category

## Sociocultural

- Public health & Safety
- Displacement
- Daily disruptions
- Loss of Identity, traditions & cultural practices

## Economic

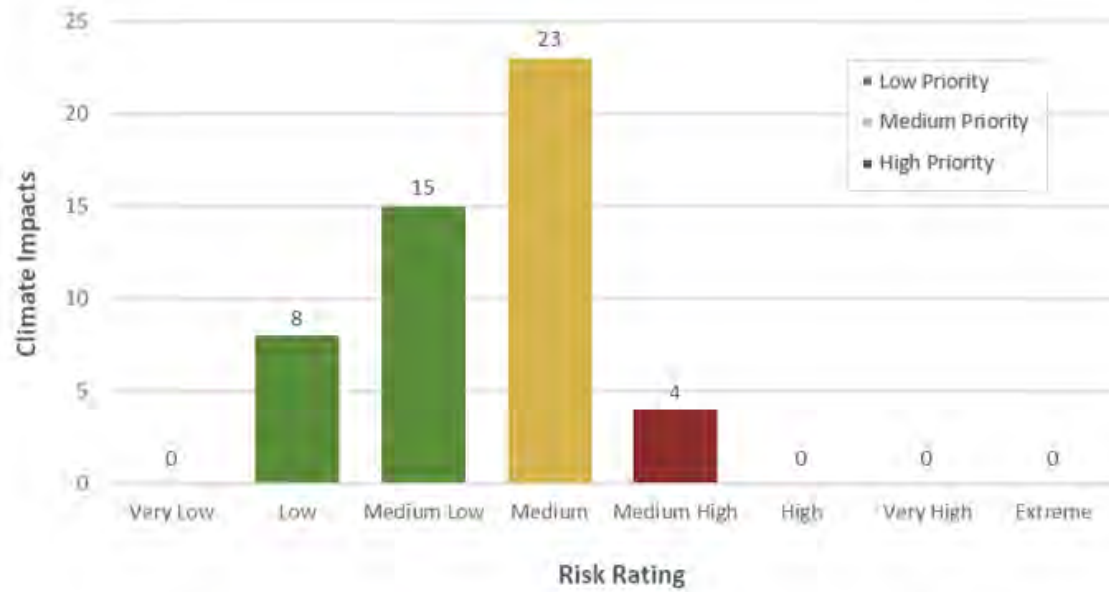
- Property damage
- Local economy & growth
- Livability & Cost of Living
- Loss of Public Services

## Natural

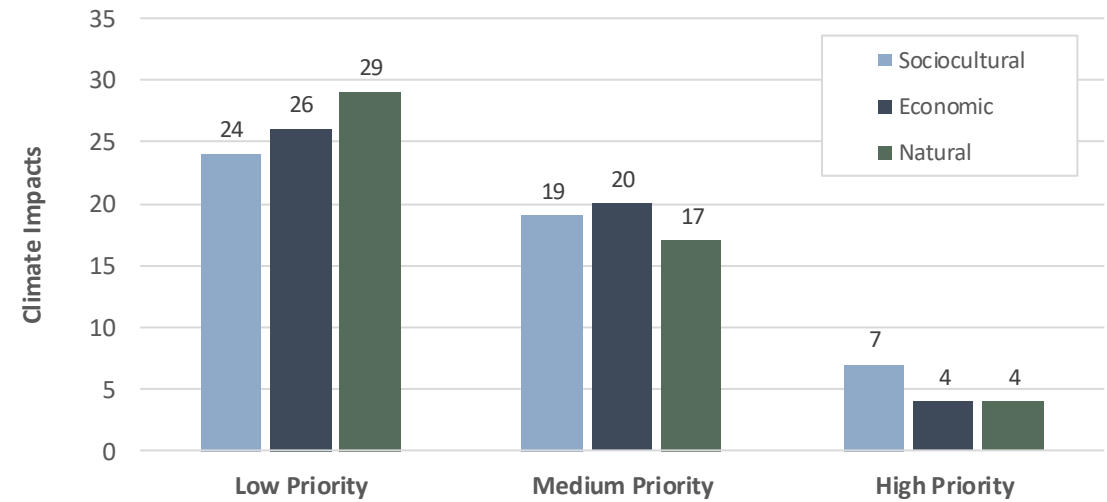
- Air
- Water
- Land
- Biodiversity & Ecosystem function

# Total Risk Distribution: Near Term (2021-2050)

Climate Impacts by Risk Category

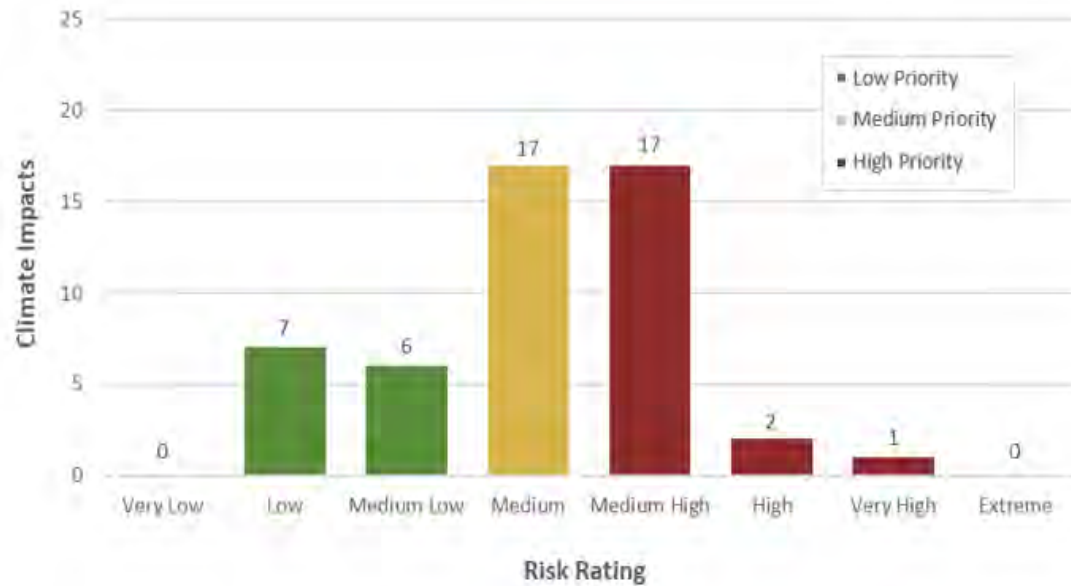


Climate Impacts by Consequence Category

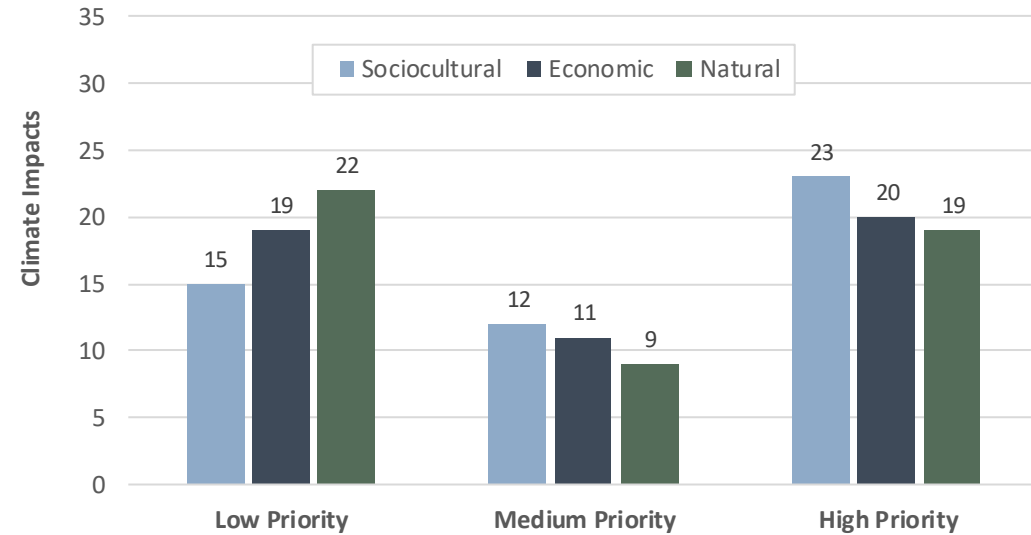


# Total Risk Distribution: Long Term (2051 – 2080)

### Climate Impacts by Risk Category



### Climate Impacts by Consequence Category



# Near- and Long-term Priority Risks

Climate Hazard	Near-Term High Priority Risks	Long-Term High Priority Risks
<b>Storm Events</b>	<ul style="list-style-type: none"> <li>Increased demand on emergency and municipal services</li> </ul>	<ul style="list-style-type: none"> <li>Increased demand on emergency services.</li> <li>Damage to property, vegetation, and infrastructure.</li> <li>Shoreline erosion</li> </ul>
<b>Intense Precipitation</b>	<ul style="list-style-type: none"> <li>Surface water contamination from runoff.</li> <li>Flooding and property damage</li> </ul>	<ul style="list-style-type: none"> <li>Surface water contamination from runoff and wastewater bypass events.</li> <li>Increased flood damage to homes</li> </ul>
<b>Hotter Summers &amp; Extreme Heat</b>	<ul style="list-style-type: none"> <li>Increased electricity demand for cooling.</li> <li>Heat-related health risks.</li> <li>Declining lake water quality (algal growth)</li> </ul>	<ul style="list-style-type: none"> <li>Increased cooling demand; increased heat-related health risks.</li> <li>Declining lake water quality.</li> <li>Poor air quality; pressure on shaded public spaces.</li> <li>Vegetation stress;</li> <li>Housing overheating.</li> <li>Infrastructure deterioration</li> </ul>
<b>Warmer, Wetter Winters</b>	<ul style="list-style-type: none"> <li>Structural damage from snow loading</li> </ul>	<ul style="list-style-type: none"> <li>Structural damage from snow loading.</li> <li>increased meltwater overwhelming stormwater and wastewater systems.</li> <li>increased exposure to infectious diseases.</li> </ul>
<b>Seasonal Shifts</b>	-	<ul style="list-style-type: none"> <li>Increased pests and invasive species.</li> </ul>
<b>Lake Level Variability</b>	-	<ul style="list-style-type: none"> <li>Reduced access to beaches and waterfront areas.</li> <li>Operational challenges for stormwater and wastewater system.</li> </ul>
<b>Cumulative Effects</b>	-	<ul style="list-style-type: none"> <li>Reduced recovery time between events and cumulative stress on infrastructure and communities</li> </ul>



# Vision Statements

**Purpose:** to provide an aspirational picture of the future.

Guelph *“Guelph is adaptable and resilient in the face of a changing climate. We are leaders in environment and sustainability. We protect city assets and sustain what we have for an equitable, strong, healthy, vibrant, and safe community. We are future ready.”*

Strathcona, Alberta: *“Strathcona County is responding to the challenges of climate change so we can remain an inclusive, healthy, and resilient place to live for generations to come”.*

Vancouver, BC: *“The City of Vancouver is proactively addressing the impacts of climate change for people, infrastructure and natural systems to build a more resilient, equitable, and healthier city.”*



# Understanding Your Visions

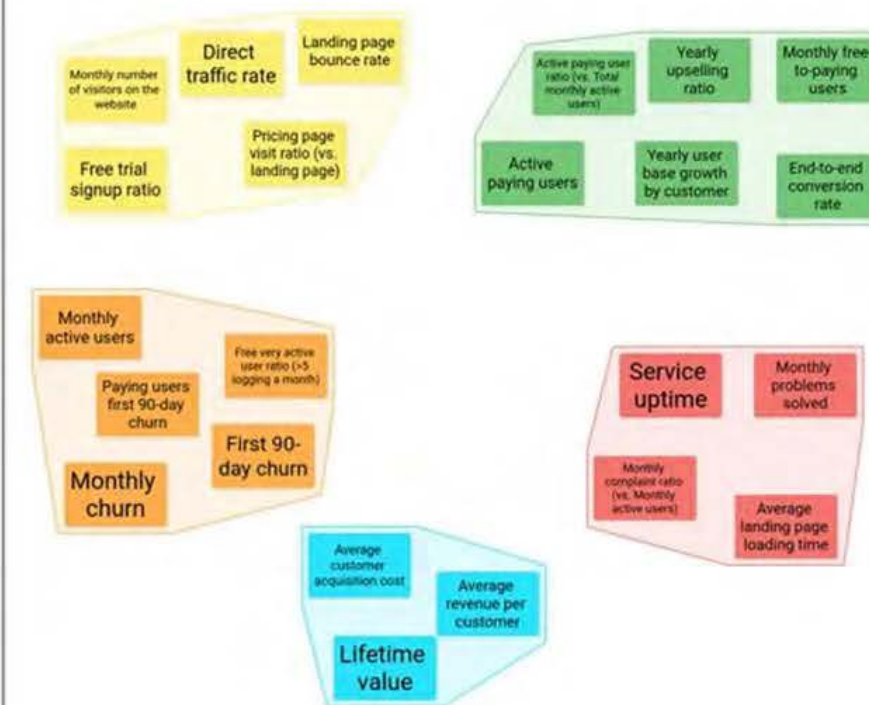
## Affinity Diagram

Purpose: Associating the right KPIs to the right value.

### Listing current and possible KPIs



### Grouping KPIs



### Labeling group of KPIs



# Activity 1: Vision for Climate Adaptation

## Activity Instructions

- Individually on Sticky notes
- Note what a successful implemented Collingwood Climate Adaptation Plan looks like to you
- 1 theme per note. Write as many notes as possible.

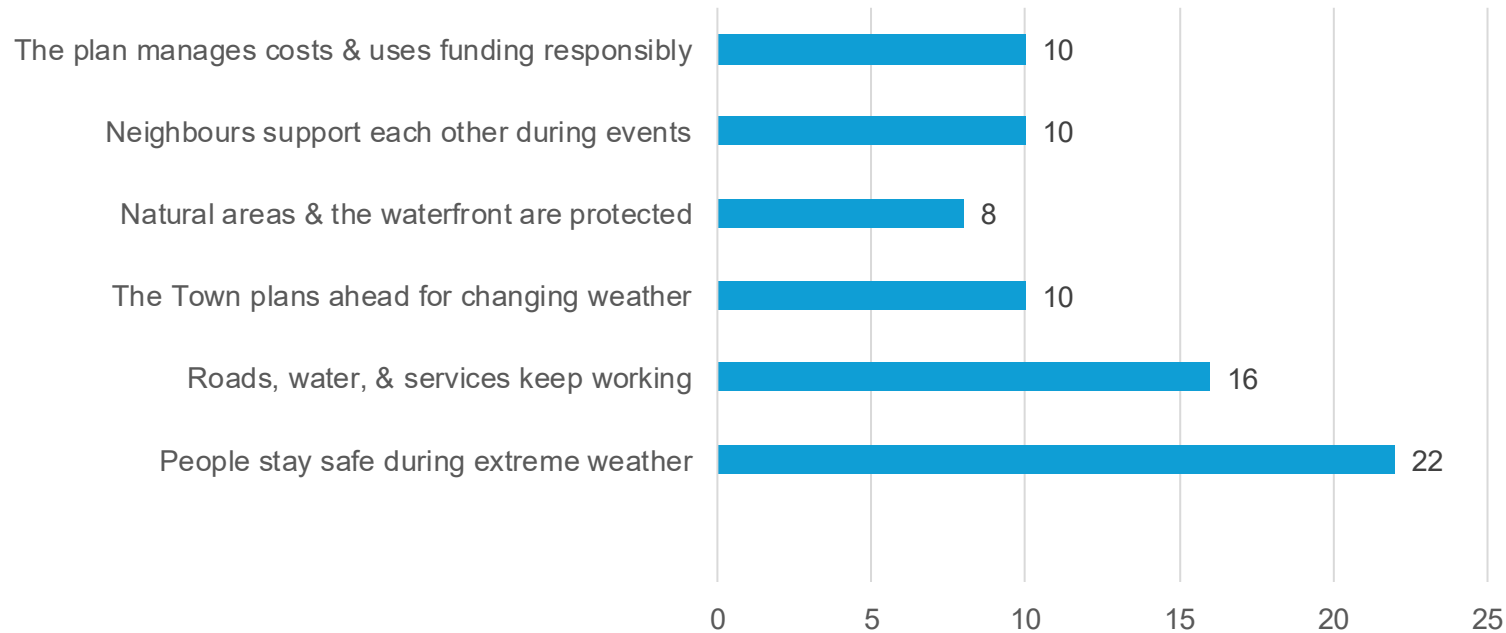
## Consider the following:

- What's different about the community?
- What are the targeted outcomes?
- What does success look like?



# Key Engagement Findings

*What would a “prepared” Collingwood look like to you?*



# Activity 1: Envisioning the Future



## *What does a **Climate Resilient, Equitable and Inclusive Future** look like for your community?*

Consider:

- **Outcomes for people & community:** What are residents, visitors and vulnerable groups able to do or access? What risks have been reduced?
- **Outcomes for services & operations:** What does the Town and its partners do differently? What systems are more reliable?
- **Outcomes for the natural environment:** What is protected, restored, or more resilient?

# Activity 2: Equitable Adaptation

***How will the actions ensure that the benefits and burdens are shared fairly and support long-term equity?***

Consider:

- **Outcomes for people & community:** Do these risks disproportionately impact parts of the community? Is anyone left out or overlooked?
- **Outcomes for services & operations:** Whose needs are the hardest to meet when conditions get worse? Can we make changes in how services are designed, delivered or resourced to address that?
- **Outcomes for the natural environment:** Does protecting or restoring this asset reduce risk for Collingwood's most vulnerable residents? Does it support a single focus, such as recreational or economic activities, or multiple?



# Activity 3: Adaptation Objectives



***Let's translate these into tangible objectives.***

Examples:

- **Outcomes for people & community:** Vulnerable residents have reliable access to cooling during heat events regardless of housing type. A by-Law is enacted to require cooling in all rental properties.
- **Outcomes for services & operations:** 100% of new stormwater infrastructure is designed to meet current climate-adjusted rainfall standards
- **Outcomes for the natural environment:** Tree canopy coverage is at a minimum of 30% across the Town

# Next Steps



- Organize and integrate adaptation vision, priorities and goals into cohesive adaptation plan.
- Review action items and align with previously identified risks.
- Next workshop: April 23



AMETHYST  
INFRASTRUCTURE  
MANAGEMENT



redbrick  
COMMUNICATIONS

# Thank you.

[Jessica.Angers@aspireconsulting.ca](mailto:Jessica.Angers@aspireconsulting.ca)

[hmcginnity@aimsustainable.ca](mailto:hmcginnity@aimsustainable.ca)

[Daryush.Esmaili@aspireconsulting.ca](mailto:Daryush.Esmaili@aspireconsulting.ca)