

# Summit View Park CONCEPT

## PUBLIC OPEN HOUSE

April 13, 2023



# Context



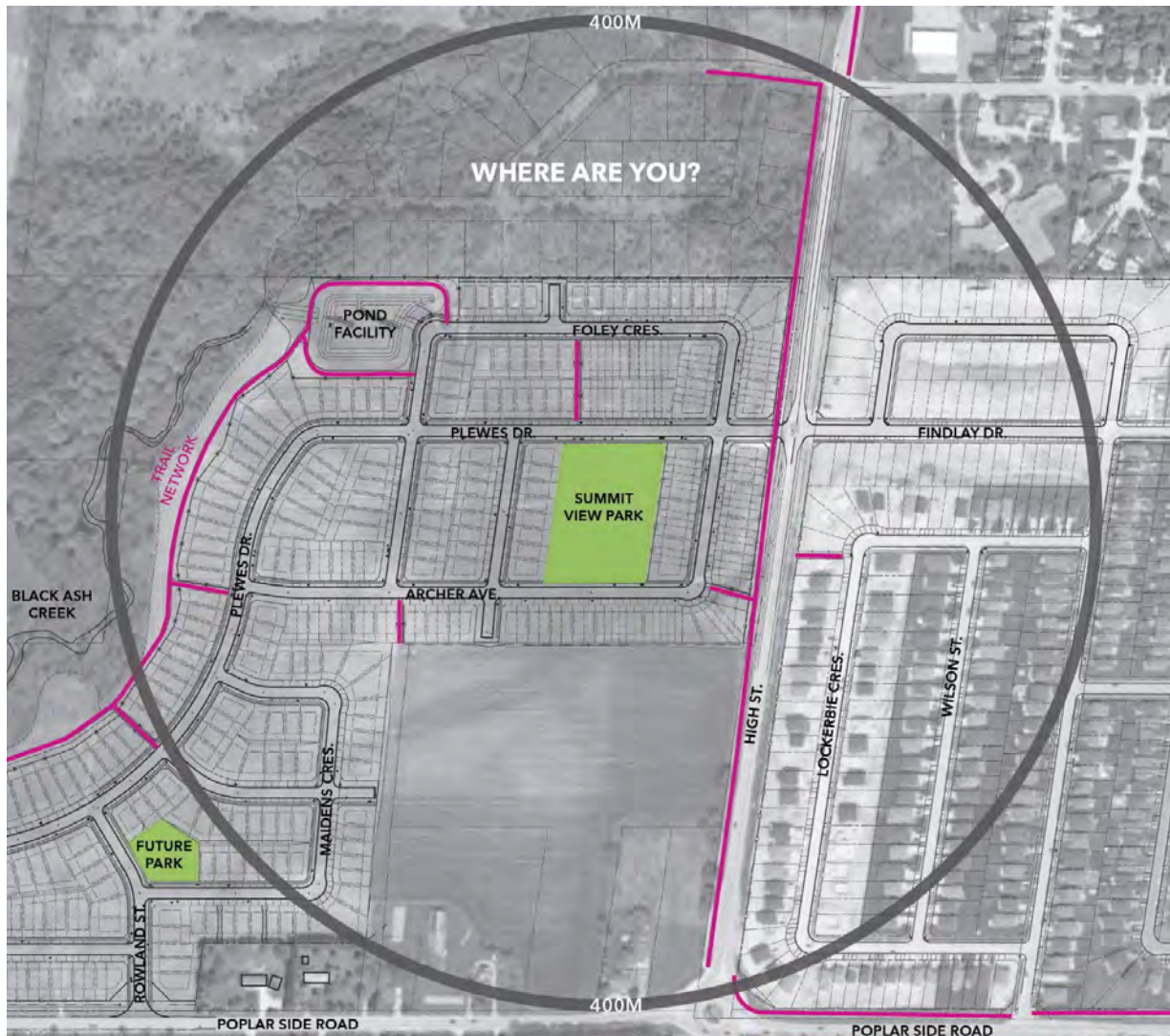
# Summit View Park 1000m Context



## LEGEND

- NEIGHBOURHOOD PARK
- EXISTING TRAILS AND WALKWAY
- SCHOOL

# Summit View Park 400m Context



## LEGEND

- NEIGHBOURHOOD PARK
- EXISTING TRAILS AND WALKWAY BLOCKS





# Design Charette

# Engagement Design Charrette

- **Public Design Charrette** (August 31, 2022): held within the park with local residents and families of the Summit View community
- **Formal Comment Sheets & Emails:** received by the Town following the Public Design Charrette until September 21, 2022





# Design Charrette Participants



Estimated that **40 +/- people attended** in-person over the course of the event, ranging from elementary school age children to seniors



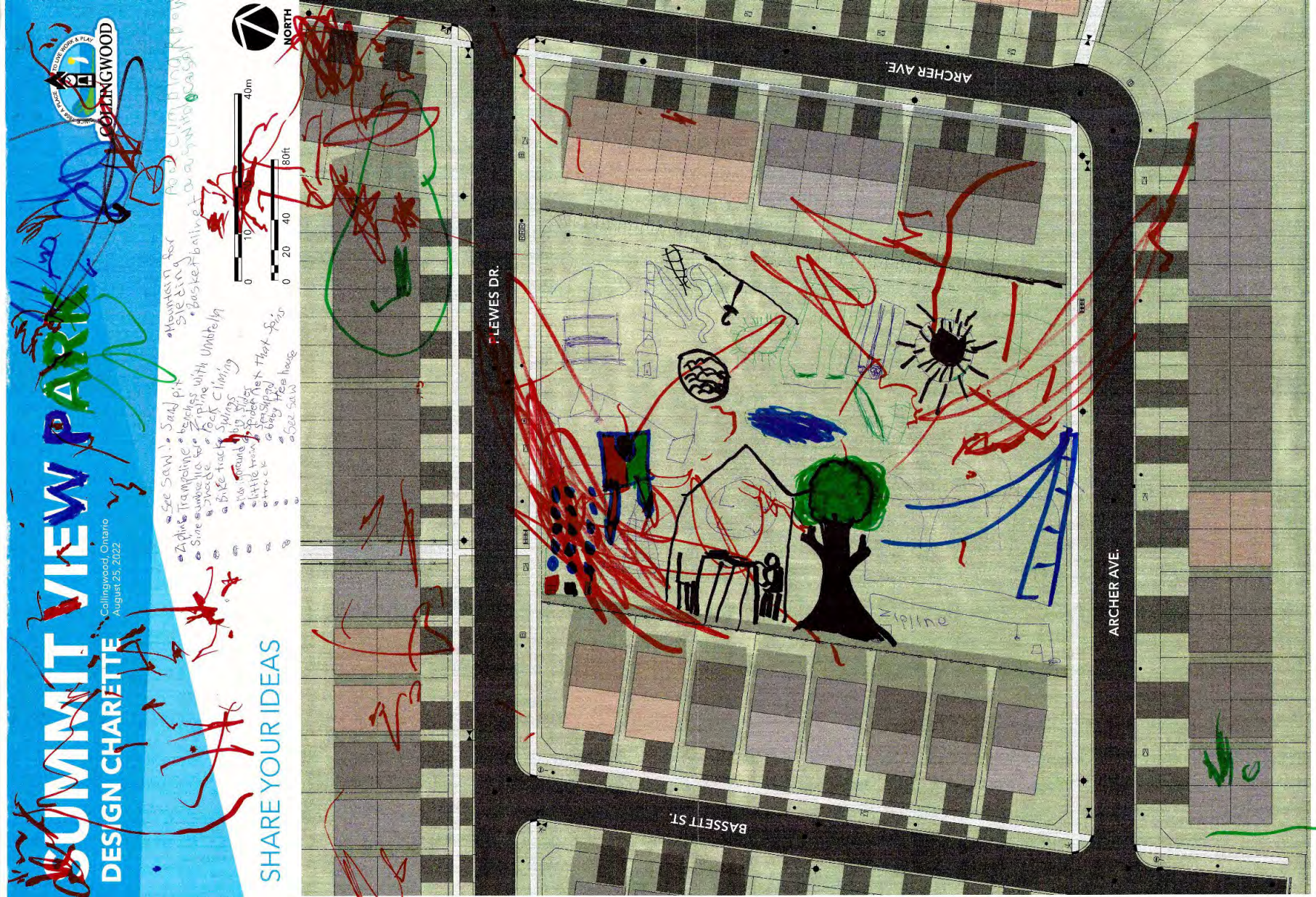
# Design Charrette Purpose

- To establish neighbourhood **goals & objectives**, to define an **overall vision** for Summit View Park, and to reach a democratic **consensus** on priorities





# Design Charrette





# Design Charrette Your Ideas

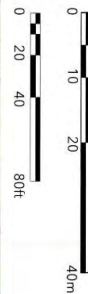


## SUMMIT VIEW PARK DESIGN CHARTER

Collingwood, Ontario  
August 25, 2022



SHARE YOUR IDEAS





# Comment Sheets Your Ideas

## COMMENT SHEET

### Summit View Park

Date: August 31, 2022

Thank you for attending the Summit View Park Design Charrette. You are encouraged to provide your design ideas, comments and recommendations. If you would like to be placed on a mailing list to receive future notifications regarding this project, please indicate **Yes** and provide your name and contact information. Please print legibly.

Yes: ☐ No: ☐

Name: \_\_\_\_\_

Address: \_\_\_\_\_

E-mail: \_\_\_\_\_

Design ideas, comments and recommendations:

in Summit View Park i would like to have a zipline, see saw and slides swings

## SHARE YOUR IDEAS

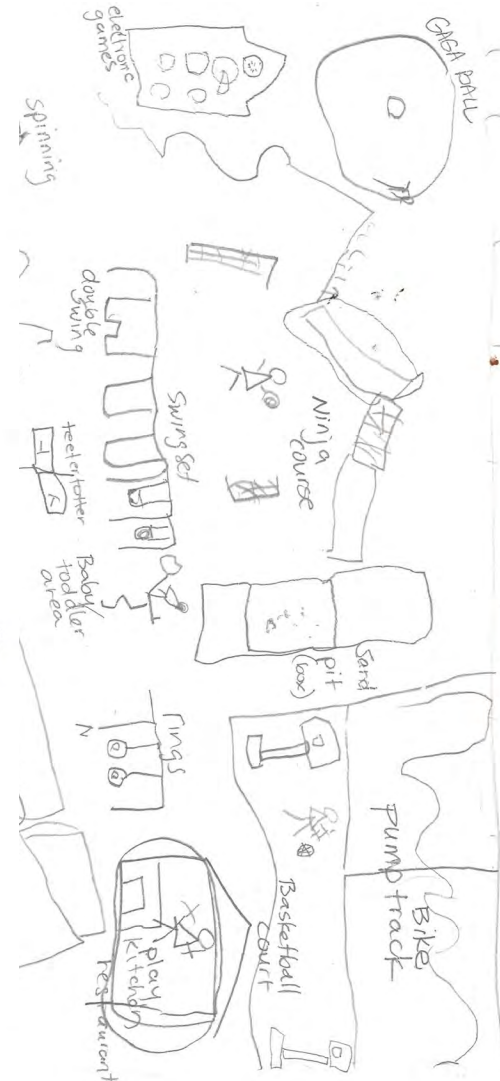
### Summit View Park

Date: August 31, 2022



ark benches

court basketball etc  
a tennis crt / pickleball  
ptions such as basketball on  
to fencing



Please leave your written comments prior to leaving or return to the contact below by mail or e-mail, no later than **September 15, 2022**. Thank you for your interest in this project.

Amanda Norris  
Town of Collingwood  
507 Tenth Line, Collingwood, Ontario L9Y 0W1  
Tel. 705.444.2500 x3236 • Email. anorris@collingwood.ca

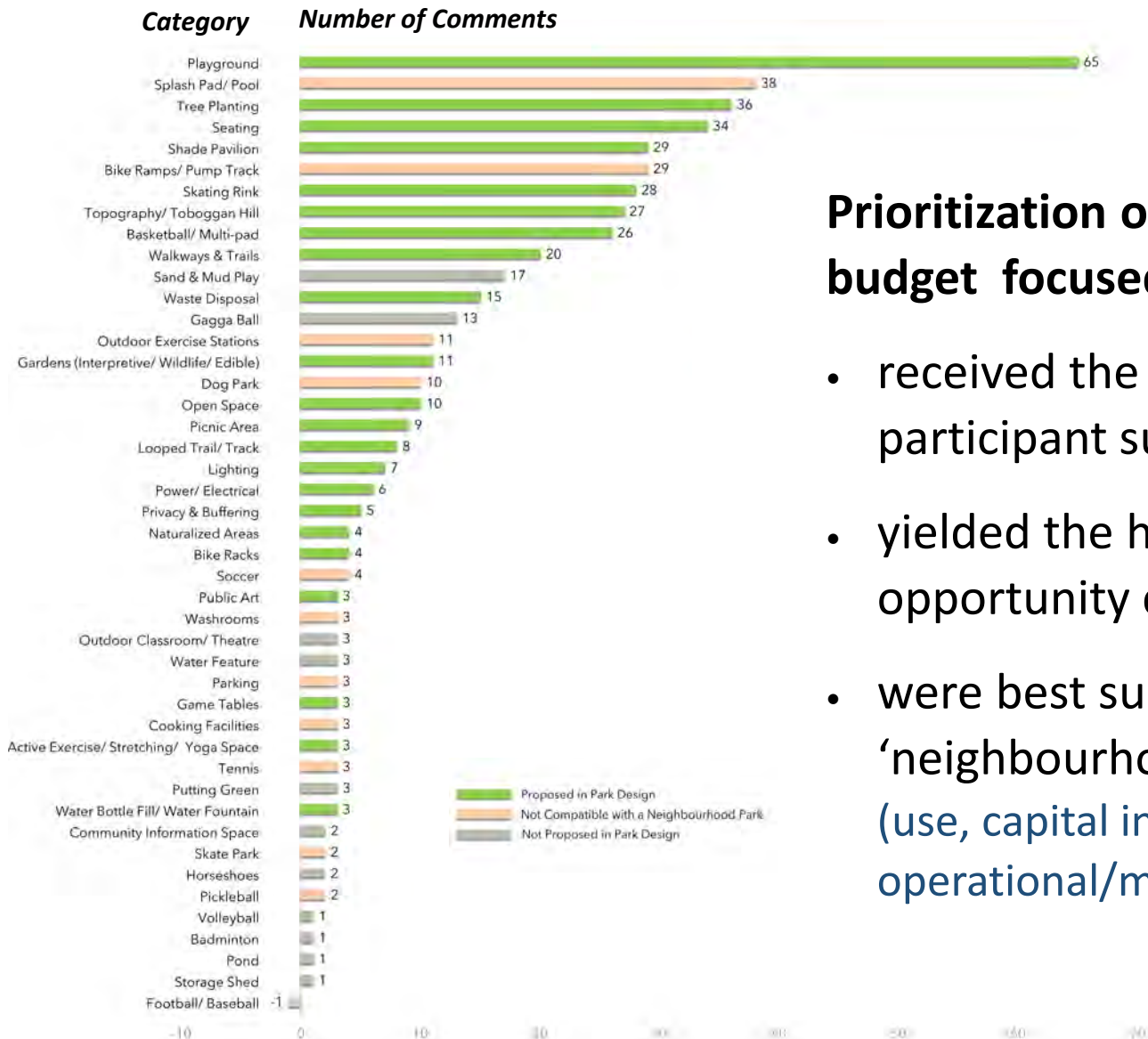


# Design Charette Comment Summary

- Overall, the community engagement process yielded a combined total of **360 comments** (graphic expressions & written), received formally from **44 documented sources**
- Ideas expressed through the group design charrette & comment sheets/emails were analyzed and **grouped into similar categories**
- Comments & design expressions were **weighted** according to source (e.g., individual or group), quantified, and scored by category
- Categories were arranged from **highest to lowest** to democratically establish priorities



# Design Charette Comment Summary



## Prioritization of available capital budget focused on ideas that:

- received the highest level of participant support
- yielded the highest return for opportunity cost
- were best suited in context of a 'neighbourhood' park  
(use, capital investment, long-term operational/maintenance capacity)

# Design Objectives



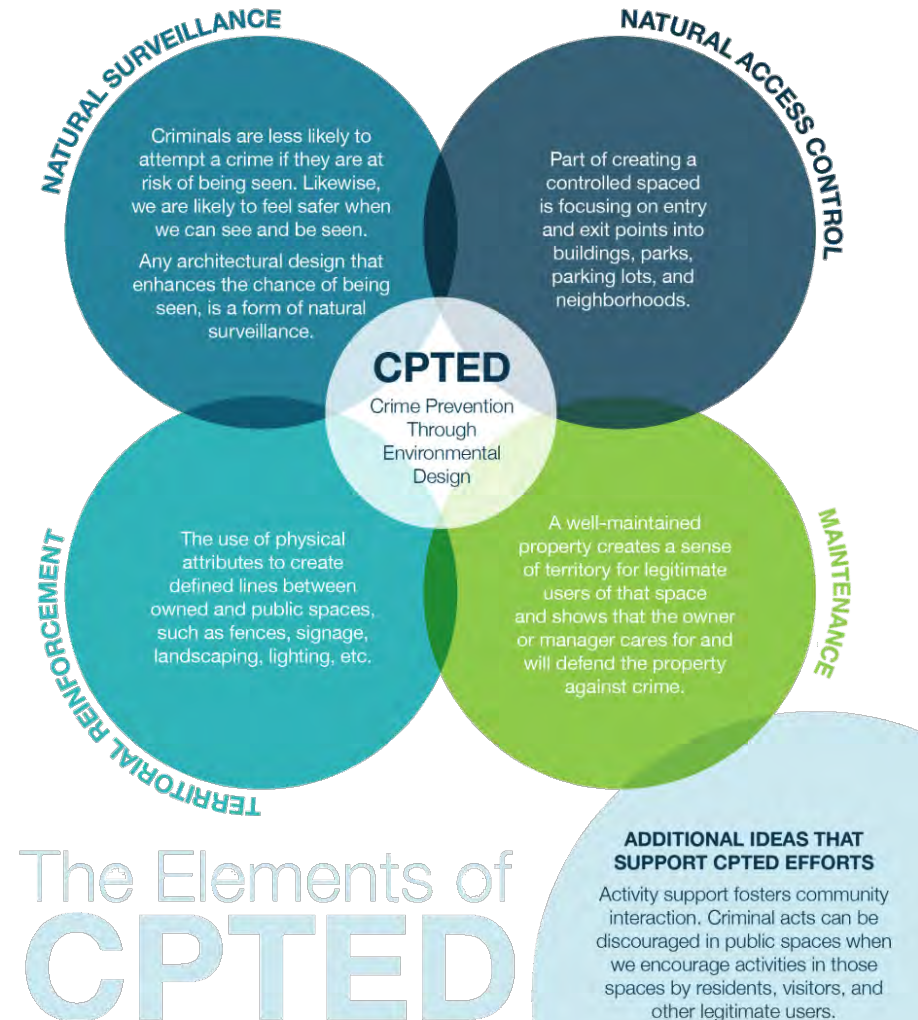
# Park Design Objectives

- **Children's playground** that:
  - accommodates a diversity of age groups, skill levels, and abilities
  - complies with safety & accessibility standards



# Park Design Objectives

- Encourage physical & social interaction for all ages/abilities and ensure that **inclusiveness** & accessibility meet or exceed accessibility regulations (AODA)
- Provide a neighbourhood park that is comfortable & encourages the **safety** of users through principles of Crime Prevention Through Environmental Design (CPTED)





# Park Design Objectives

- **Tree plantings** to:
  - provide shade, buffer winds, define space, create habitat and a natural aesthetic
  - establish a physical/visual buffer between park users and residential properties



# Park Design Objectives

- **Site furnishings to:**
  - support active transportation & park amenities (bike racks, seating, waste receptacles, signage, etc.)
  - create a diversity of seating and lounging opportunities





# Park Design Objectives

- Versatile **community gathering space** that can be used passively for picnics or for organized neighbourhood events
- **Centralized shade structure** to support a community gathering space



# Park Design Objectives

- Incorporate a relatively flat **lawn area** that could be converted into a temporary **natural skating rink**, including a winterized water service & yard hydrant (neighbourhood led build/manage initiative)





# Park Design Objectives

- **Internal walkway/trail** system to provide walking & biking opportunities for all ages
- **Open lawn** space for active & passive activities (play lawn)





# Park Design Objectives

- **Topography** to:
  - define space
  - enhance play experience
  - provide low-risk tobogganing opportunities for young children
  - enhance microclimates (wind buffers and shade)





# Park Design Objectives

- **Multi-use sports pad** with basketball nets & other games (e.g., hopscotch, etc.) for:
  - skills development
  - to support youth recreation
  - provide spectating & social opportunities for youth





# Park Design Objectives

- **Re-naturalize** portions of the park to:
  - create contextual & aesthetic connection to the Black Ash Creek
  - create habitat & expand environmental benefits (pollinators)
  - enhance stormwater management





# Park Design Objectives

- Incorporate **public art** opportunities, where possible
- Create **thematic** connection to the **Black Ash Creek** through naturalized areas, playground themes, and compatible recreational amenities (hiking & biking trails, etc.)



# Other Considerations



# Play Types Active Play

## ACTIVE PLAY

- Moving
- Running
- Jumping
- Climbing
- Sliding
- Twirling
- Swinging
- Spinning
- Rolling Around





# Play Types Artistic Play

## ARTISTIC PLAY

- Drawing
- Crafting
- Painting
- Colouring
- Writing
- Singing
- Drumming
- Dancing





# Play Types Creative Play

## CREATIVE PLAY

- Dressing up
- Make-believe
- Pretend play
- Playhouses
- Pretend ships
- Dolls, costumes, & props
- Manipulating
- Building & Molding
- Sifting
- Pouring & scooping
- Stacking and combining
- Altering





# Play Types Games Play

## GAMES PLAY

- Organizing
- Communicating
- Collaborating
- Following “rules”

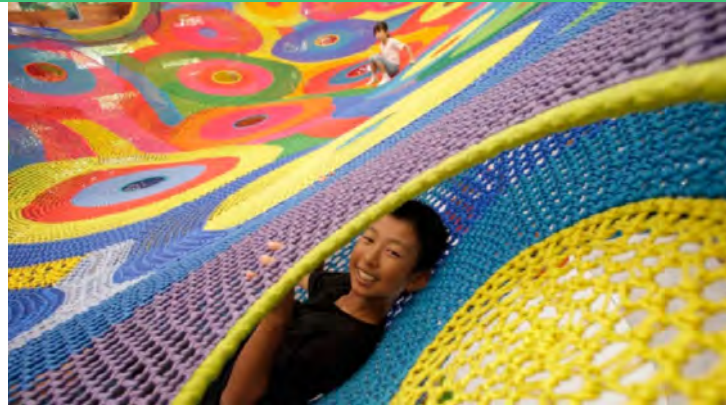




# Play Types    Sensory Play

## SENSORY PLAY

- Touching different interesting textures
- Smelling flowers & plants
- Hearing music & sounds
- Tasting edible plants & fruits
- Seeing different perspectives & angles as well as beautiful shapes & colours





# Play Types Social Play

## SOCIAL PLAY

- Sharing
- Cooperating
- Taking turns





# Play Types Reflective Play

## REFLECTIVE PLAY

- Watching
- Resting
- Reflecting
- Thinking
- Daydreaming
- Staring into space





# Play Types All Ages!!!



**Adults are just big kids with similar recreational & play needs**







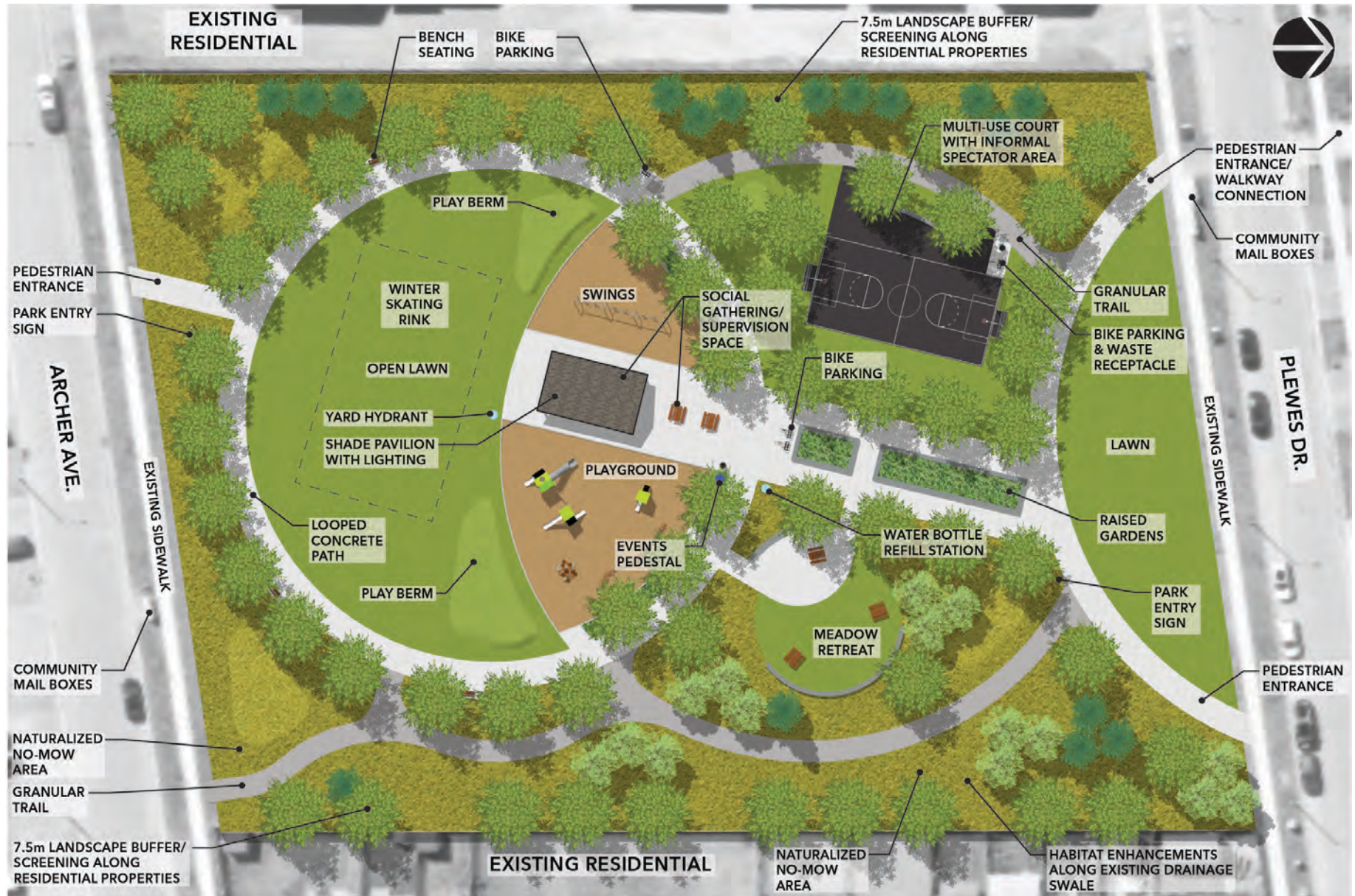
# Concept

# Concept Context





# Concept Overall





# Concept Plewes Drive





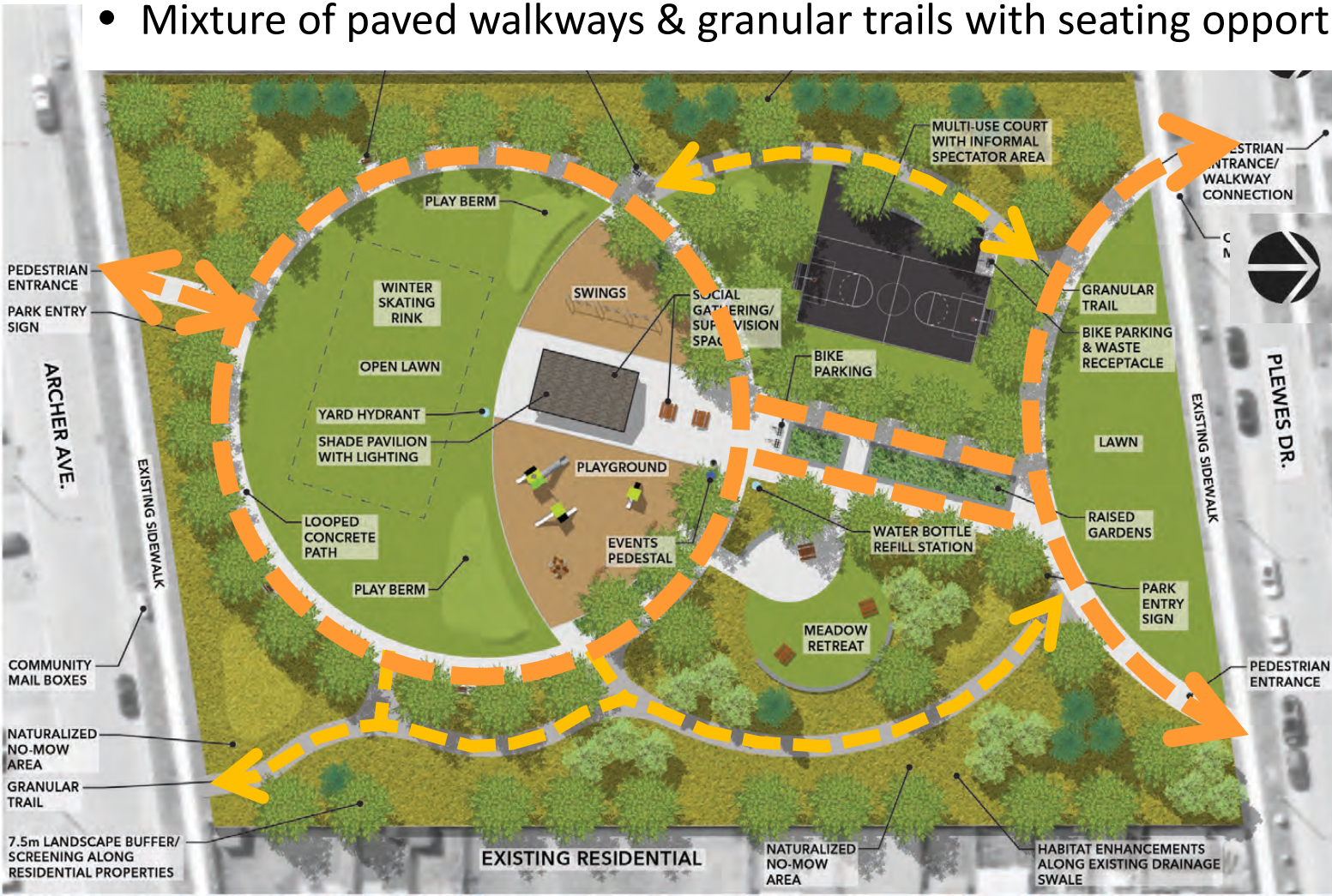
# Concept Archer Avenue





# Concept Walkways & Trails

- Connection to walkway block (across Plewes Drive) & community mailboxes
- Various loops through a diversity of park environments (passive & active use)
- Mixture of paved walkways & granular trails with seating opportunities



ACTIVE

GAMES

SENSORY

SOCIAL

REFLECTIVE



# Concept Promenade

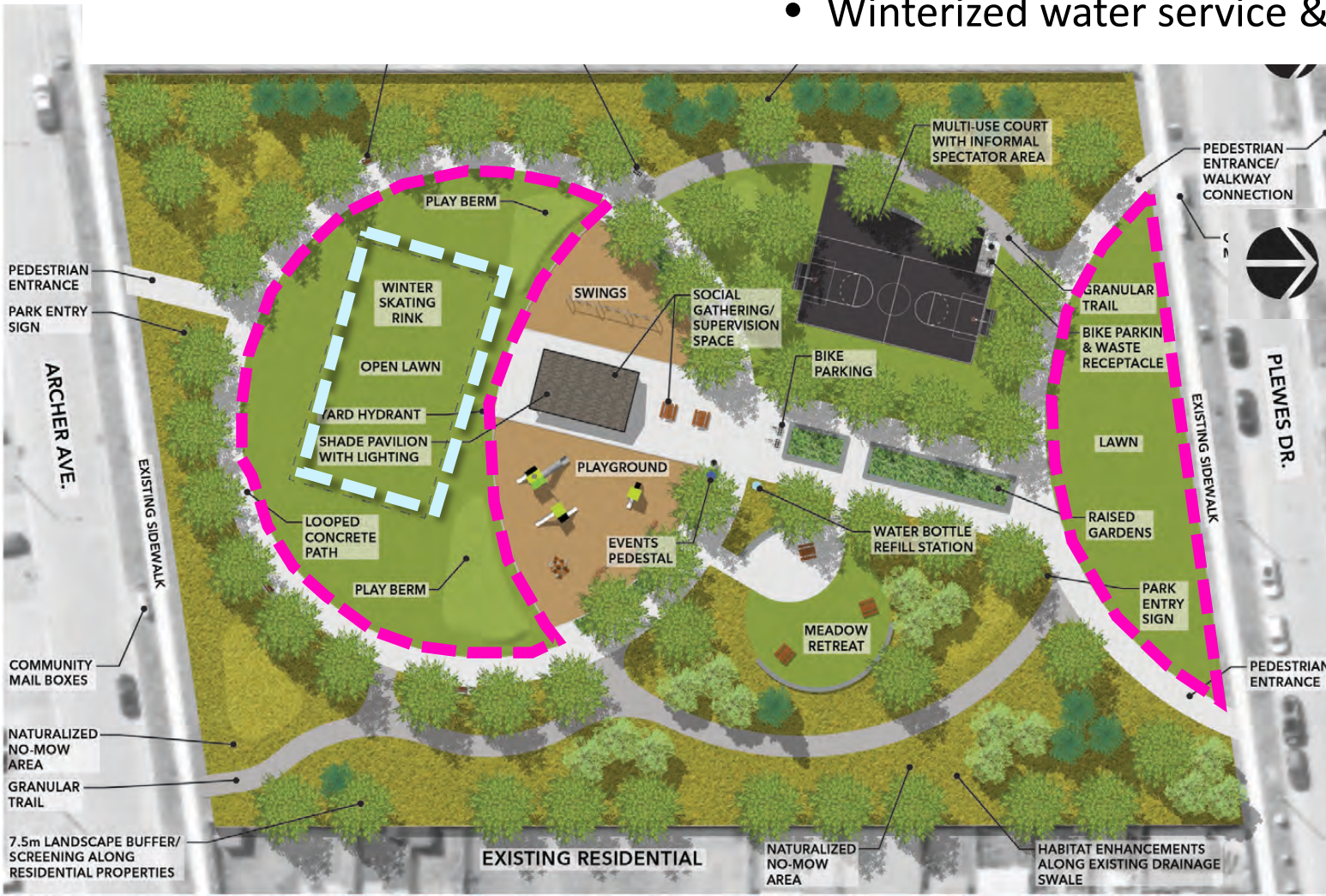
- Central promenade terminates on shade pavilion
- Water bottle fill station, bike parking, seating, waste receptacles & events pedestal (GFI outlets) incorporated
- Opportunity for raised planters to support community/pollinator gardens





# Concept Open Lawn & Skating

- Large open lawn spaces for passive & active recreation/ play
- Opportunity for community build/ maintain skating rink (15m x 30m approx.)
- Winterized water service & yard hydrant



ACTIVE

GAMES

SOCIAL

REFLECTIVE



# Concept Open Lawn & Skating

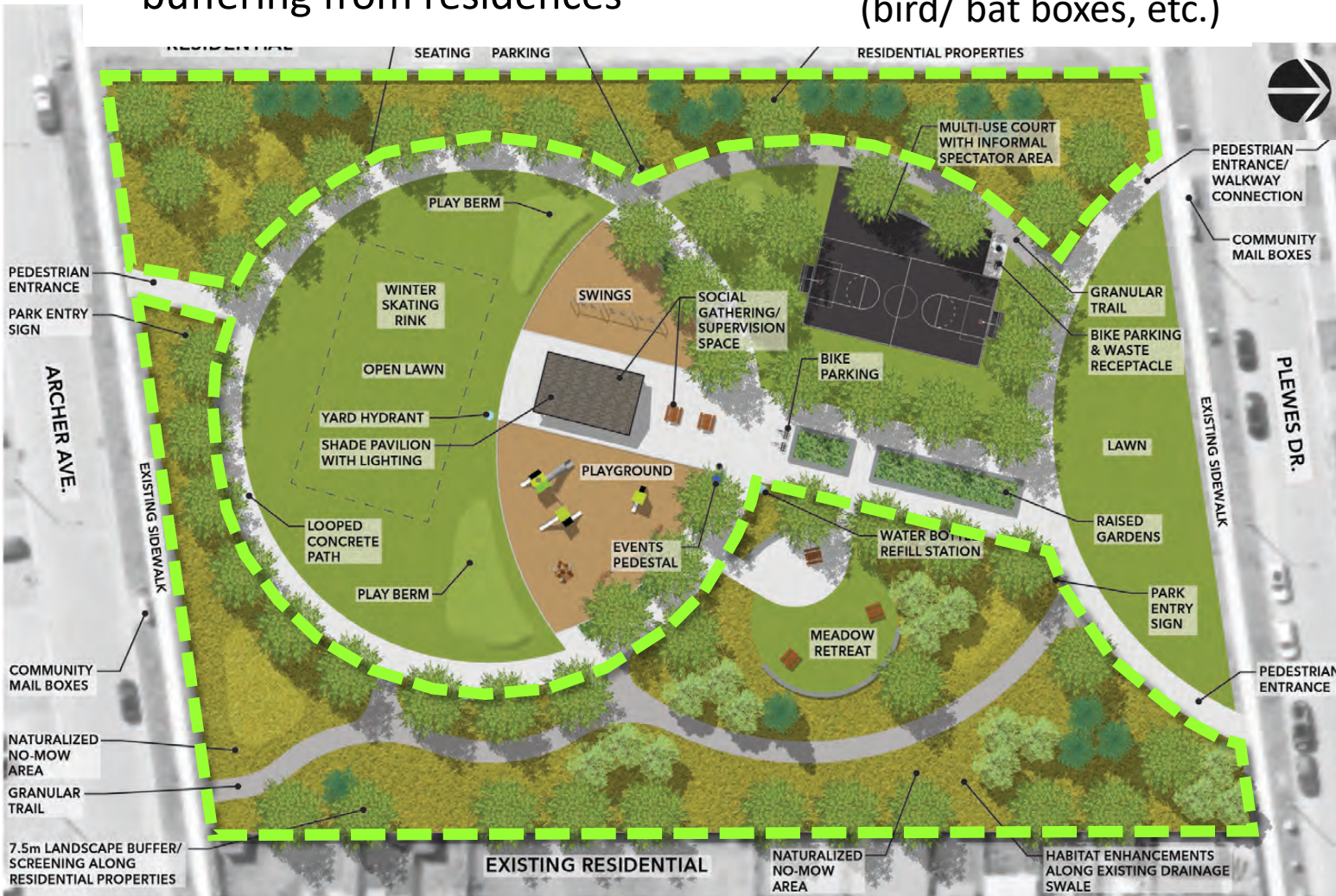


ACTIVE  
CREATIVE



# Concept Naturalization (Black Ash Creek)

- Re-naturalization along perimeter drainage swales to provide buffering from residences
- Tree planting & no-mow meadow areas
- Opportunity for habitat enhancements (bird/ bat boxes, etc.)



SENSORY

REFLECTIVE

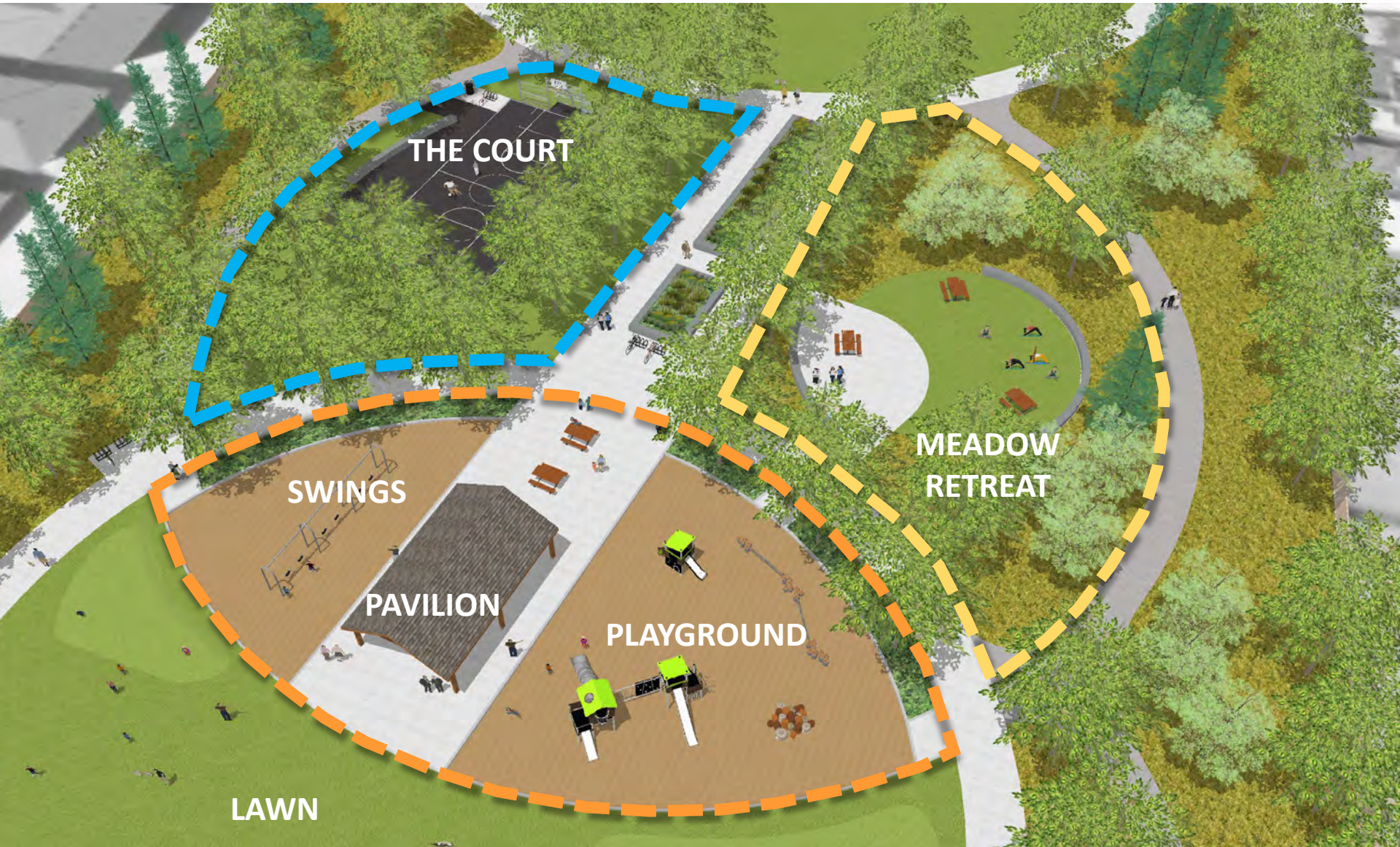


# Concept Naturalization





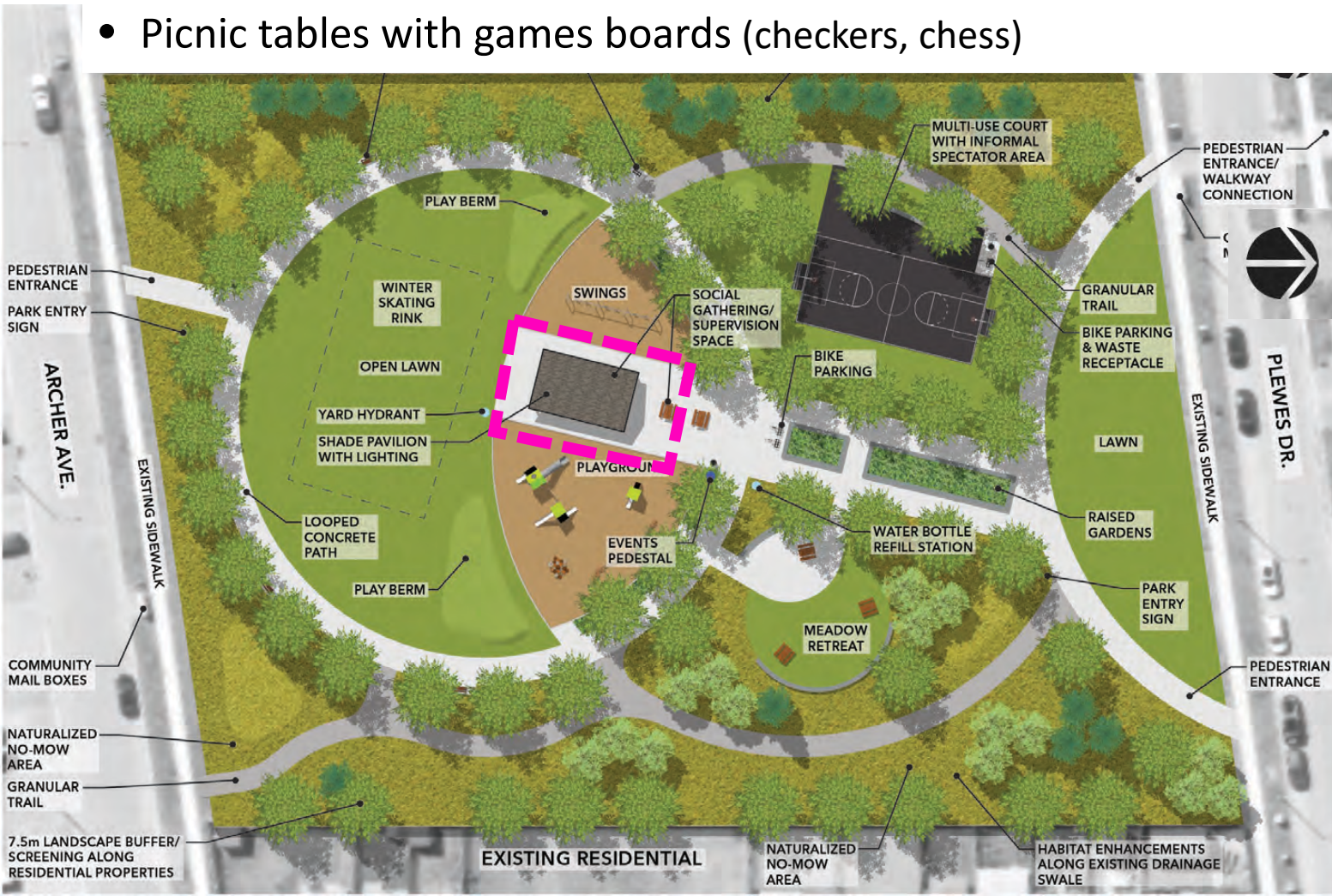
# Concept Neighbourhood Hub





# Concept Pavilion

- Prominent central location to define 'community hub' with lighting
- Shaded social & supervision space adjacent to playground areas
- Picnic tables with games boards (checkers, chess)



GAMES

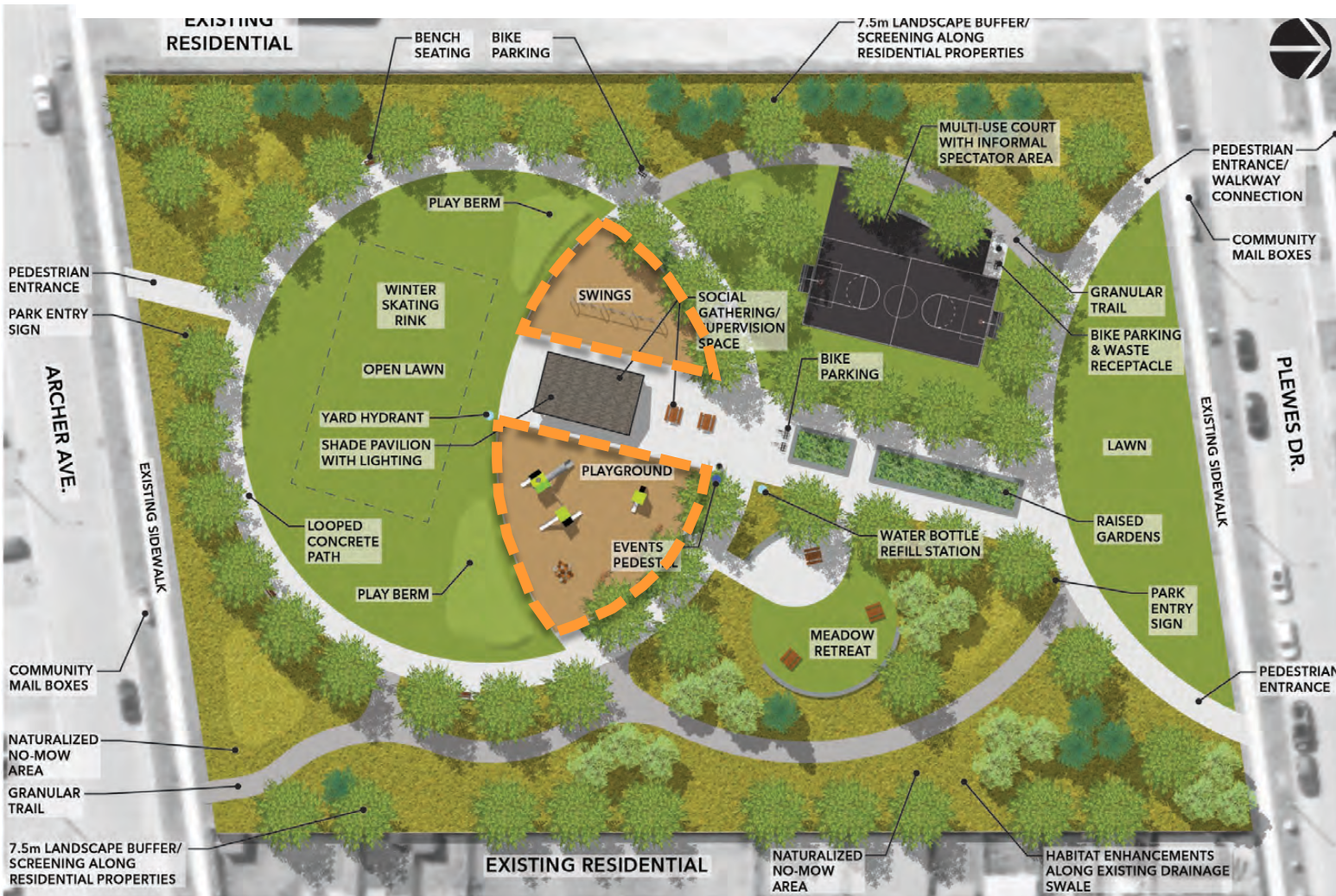
SOCIAL

REFLECTIVE



# Concept Playground & Swings

- Adjacent to shade pavilion to support adult social uses & supervision
- Separated swing & playground areas



ACTIVE

CREATIVE

SOCIAL



# Concept Playground

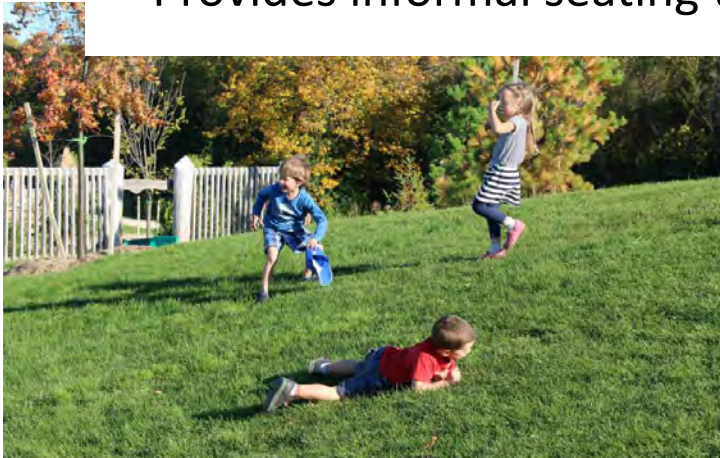


- Separated toddler & youth play areas/structures
- Engineered wood fiber safety surfacing supports natural aesthetic of Black Ash Creek theme, while providing accommodation for wheelchair access



# Concept Playspace Berms

- Berming along playground edge allows for incorporation of natural playground elements (e.g., hill slide, etc.)
- Provides informal seating to observe lawn activities



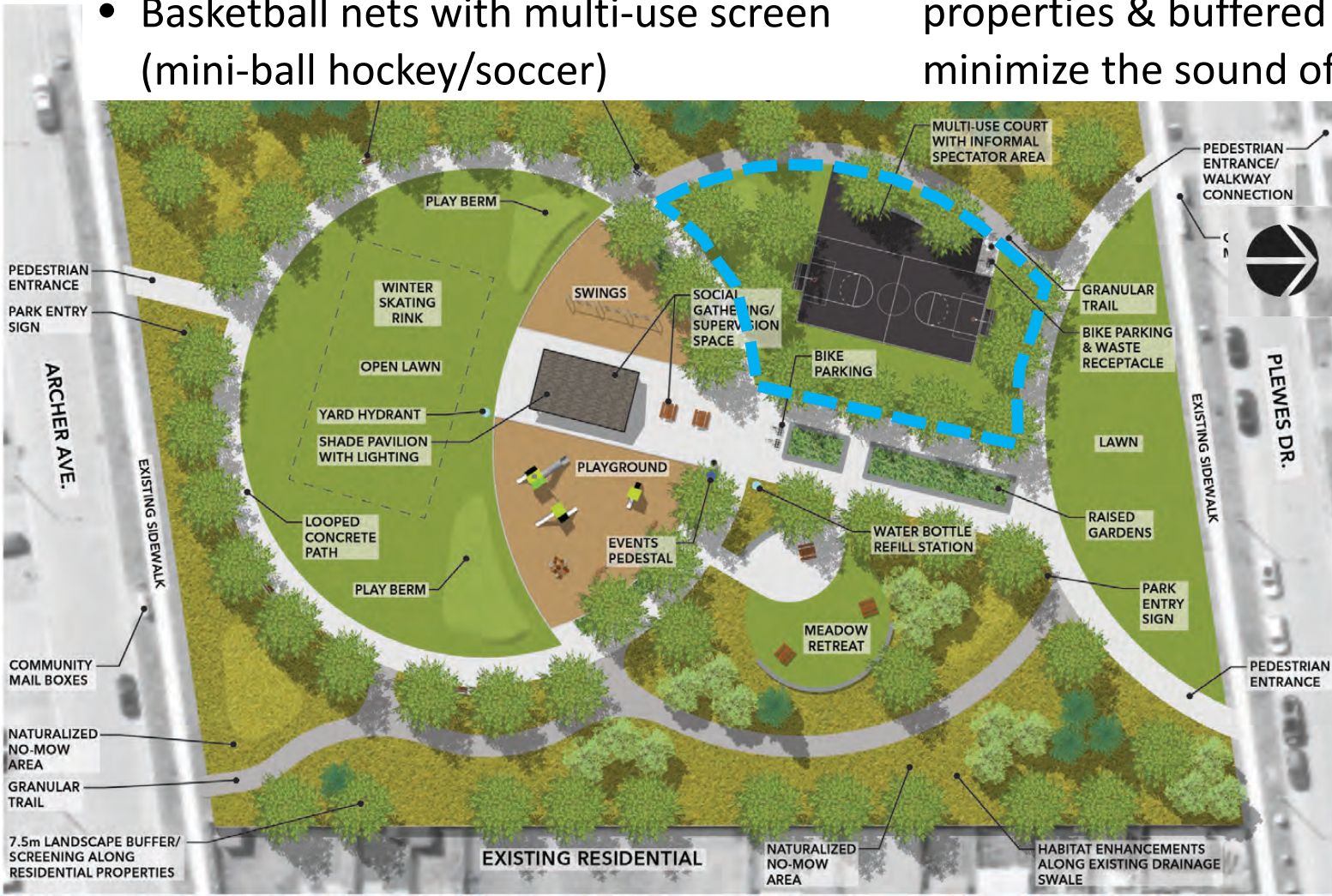
- Provides informal play opportunities for rolling & toddler tobogganing in the winter





# Concept The Court

- 10m x 20m (32' x 65') multi-use asphalt court with line painted game play
- Basketball nets with multi-use screen (mini-ball hockey/soccer)
- Seating for youth social & spectating
- Located away from residential properties & buffered by trees to minimize the sound of court play



ACTIVE

GAMES

SOCIAL



# Concept The Court





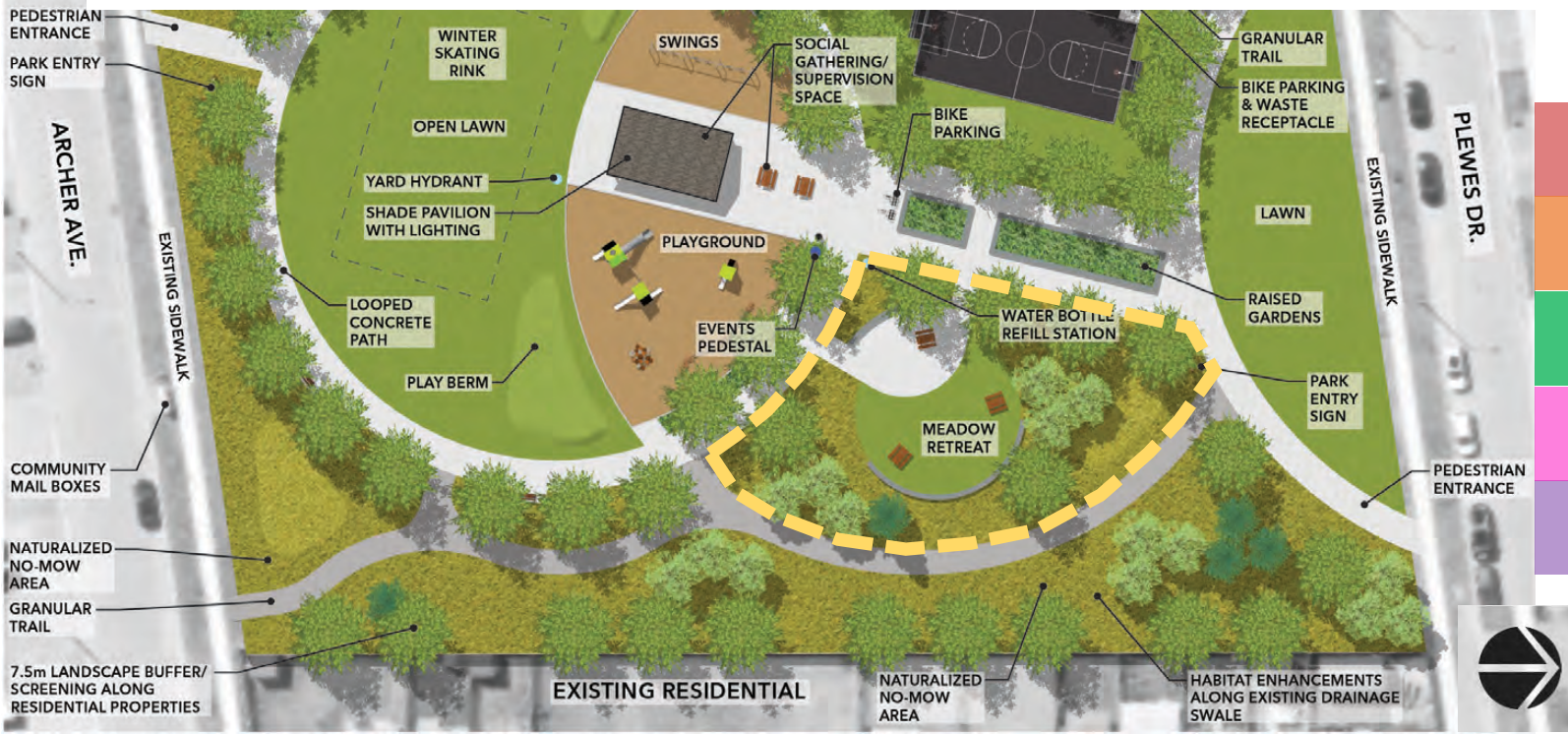
# Concept The Court





# Concept Meadow Retreat

- Multi-purpose space located within naturalized meadow
- Small social gatherings or group activities (e.g., picnicking, yoga, tai-chi, etc.)
- Paved portion with informal stone seating can function as an outdoor classroom or small performance space
- Also serves as a quiet reflective space that is separated from more active play environments (e.g., reading, wildlife watching, etc.)





# Concept Meadow Retreat



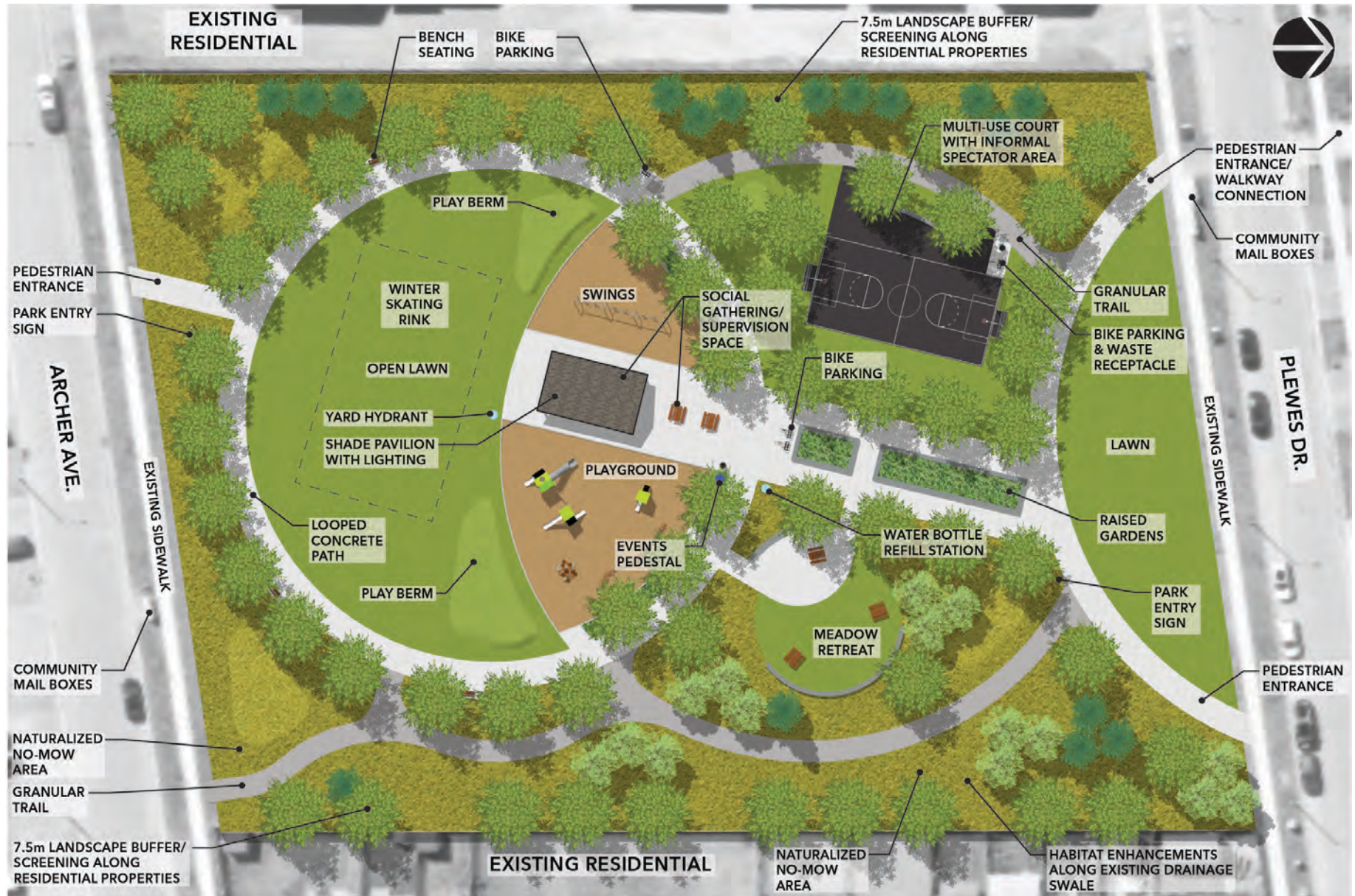


# Concept Meadow Retreat





# Concept Overall





# Questions ?