

Wilson-Sheffield Park **CONCEPT**

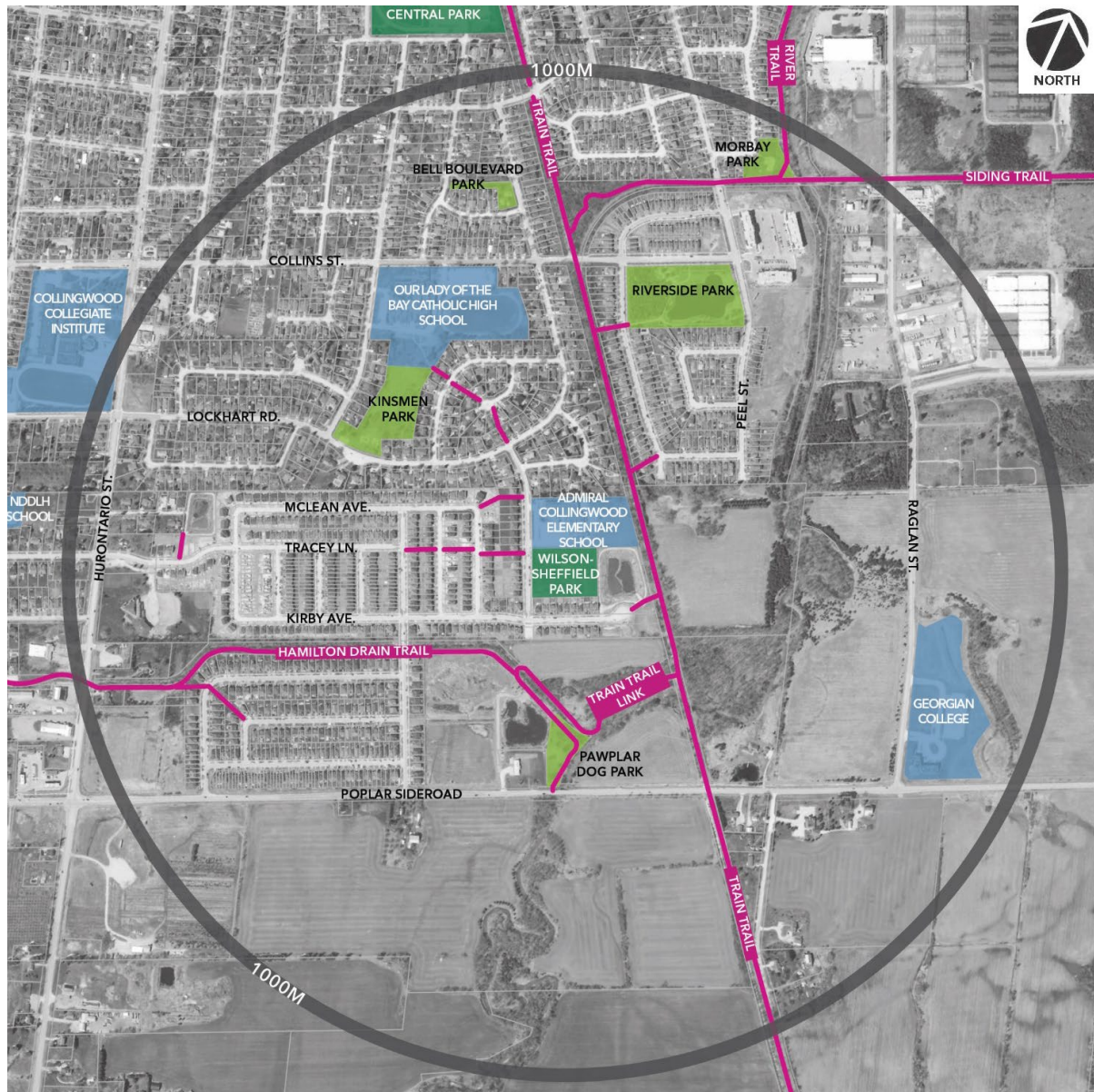
PUBLIC OPEN HOUSE

March 9, 2023



Context

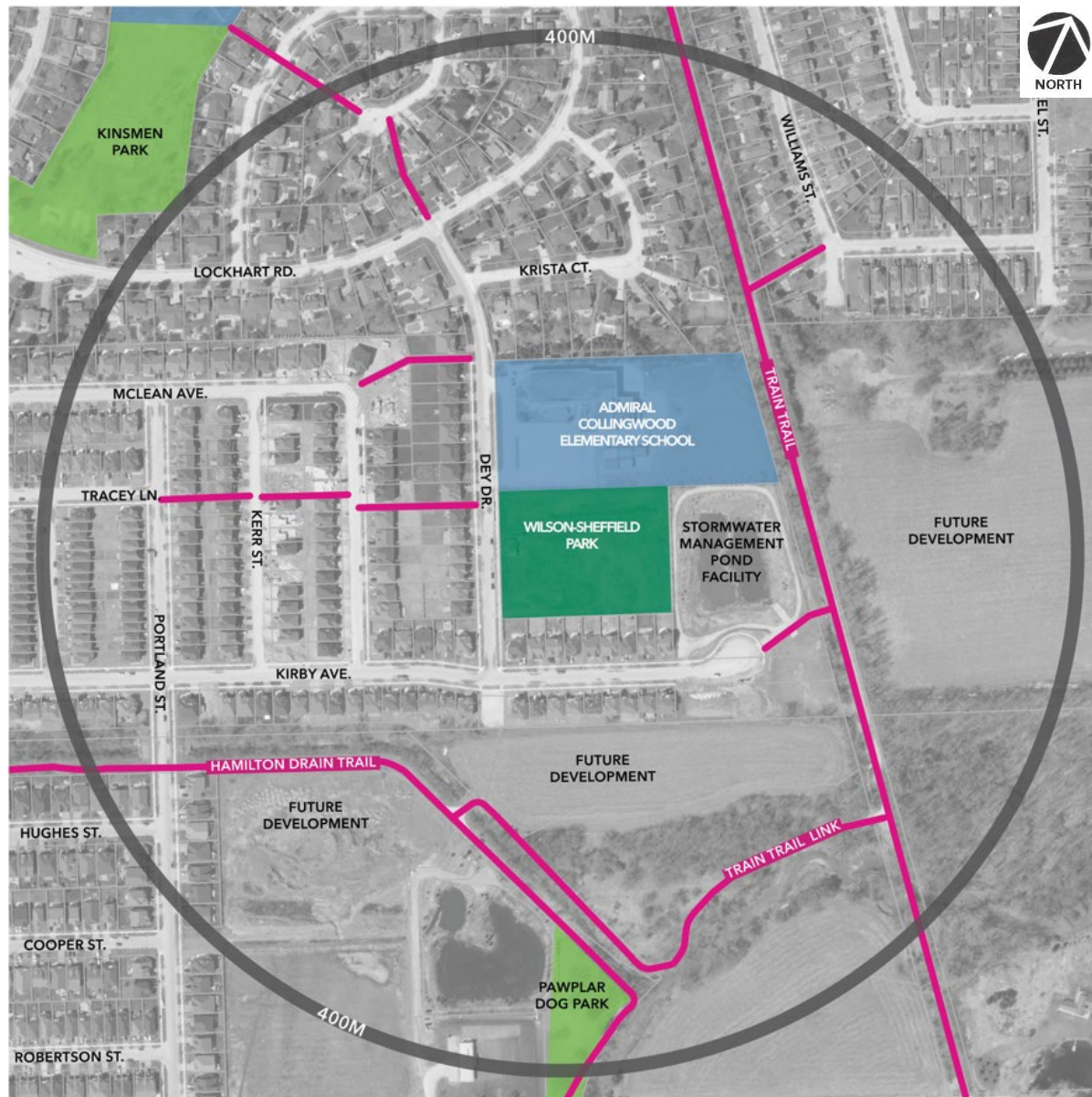
Wilson-Sheffield Park 1000m Context



LEGEND

- COMMUNITY PARK
- NEIGHBOURHOOD PARK
- EXISTING TRAILS AND WALKWAYS
- SCHOOL

Wilson-Sheffield Park 400m Context



LEGEND

- COMMUNITY PARK
- NEIGHBOURHOOD PARK
- EXISTING TRAILS AND WALKWAYS
- SCHOOL

Design Objectives

Park Design Objectives

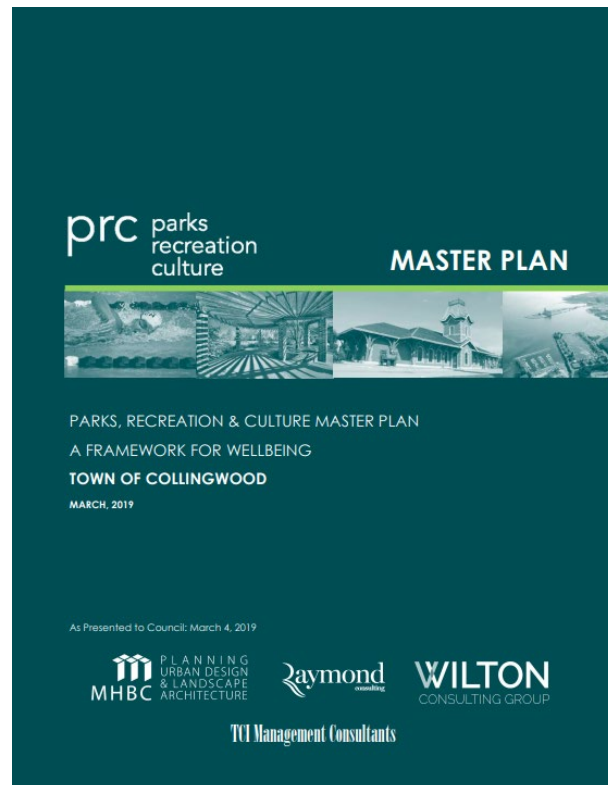
- Provide a centralized washroom building for all park users that includes sports storage, informal change opportunities, localized area lighting, and protection from the elements (canopy/cover)
- Create a unifying outdoor public gathering, spectating, and wayfinding space adjacent to the building (with shade/ rain protection) that can be used passively or for organized events



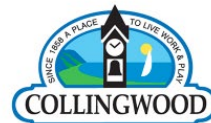
Example: Amenity building at West Orillia Sports Complex

Park Design Objectives cont'd

- Provide meaningful court facilities to support the growth of tennis and pickleball as per recommendations of Collingwood's Community Based Strategic Plan & the Parks, Recreation, & Culture (PRC) Master Plan adopted by Council



COMMUNITY BASED STRATEGIC PLAN TOWN OF COLLINGWOOD 2020 - 2023



Park Design Objectives cont'd

- Provide adequate supporting amenities to facilitate convenient day-to-day access to tennis and pickleball for the public and sports groups and to support organized events (e.g., league play, tournaments, etc.)



Park Design Objectives cont'd

- Provide 3 on 3 basketball facilities for skills development and to support youth recreation
- Locate court facilities adjacent to compatible neighbouring uses and in consideration of sound attenuation for nearby residential properties



Park Design Objectives cont'd

- Incorporate on-site parking to accommodate general park users, support sport facilities/events, and provide opportunity for ongoing & future discussions with SCDSB regarding overflow parking
- Provide a children's playground that accommodates a diversity of age groups, skill levels, and abilities and ensure compliance with safety standards



Park Design Objectives cont'd

- Maintain open lawn space within the park for informal active & passive activities (play lawn)
- Encourage physical and social interaction for all ages and abilities and ensure that inclusiveness and accessibility meet or exceed accessibility regulations (AODA)
- Tree planting to provide microclimate benefits (shade, wind buffers, habitat, spatial definition, etc.), as well as screening/sound attenuation along residential interfaces



Park Design Objectives cont'd

- Integrate naturalized areas from the adjacent stormwater management pond into the park for a complementary aesthetic and to reduce maintenance, create habitat, and expand environmental benefits
- Reconfigure existing stormwater management pond fencing to create a direct connection to the Train Trail and incorporate a trailhead within the park
- Establish an outdoor fitness circuit along the adjacent trail network, with Wilson-Sheffield Park providing trailhead parking, wayfinding, and user amenities



Park Design Objectives cont'd

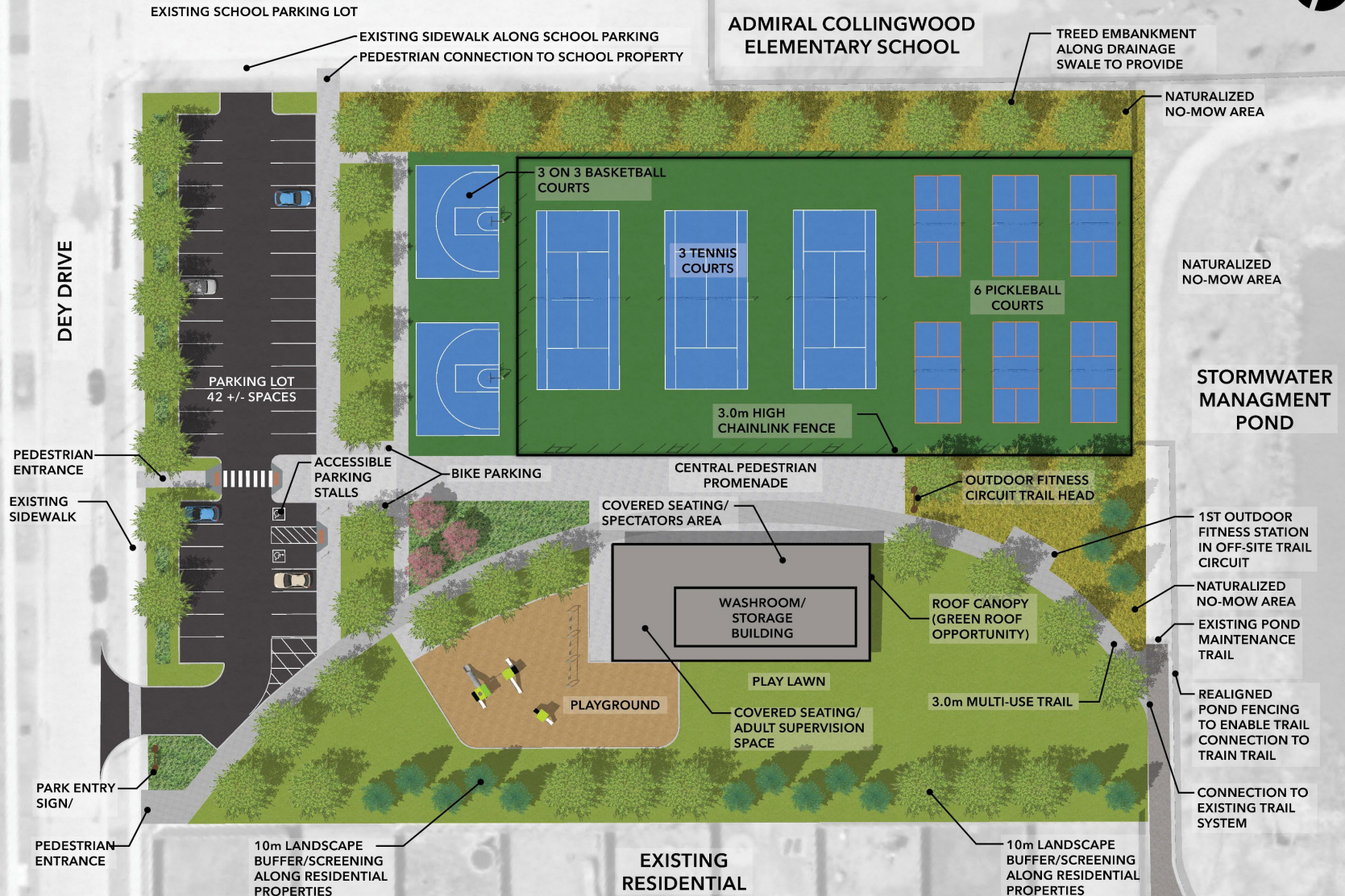
- Provide appropriate site furnishings to support active transportation and park amenities (bike racks, seating, waste receptacles, signage, etc.)
- Incorporate public art opportunities, where possible



- Include design consideration that may allow for integration/shared-use opportunities between the park and Admiral Public School for mutual benefit

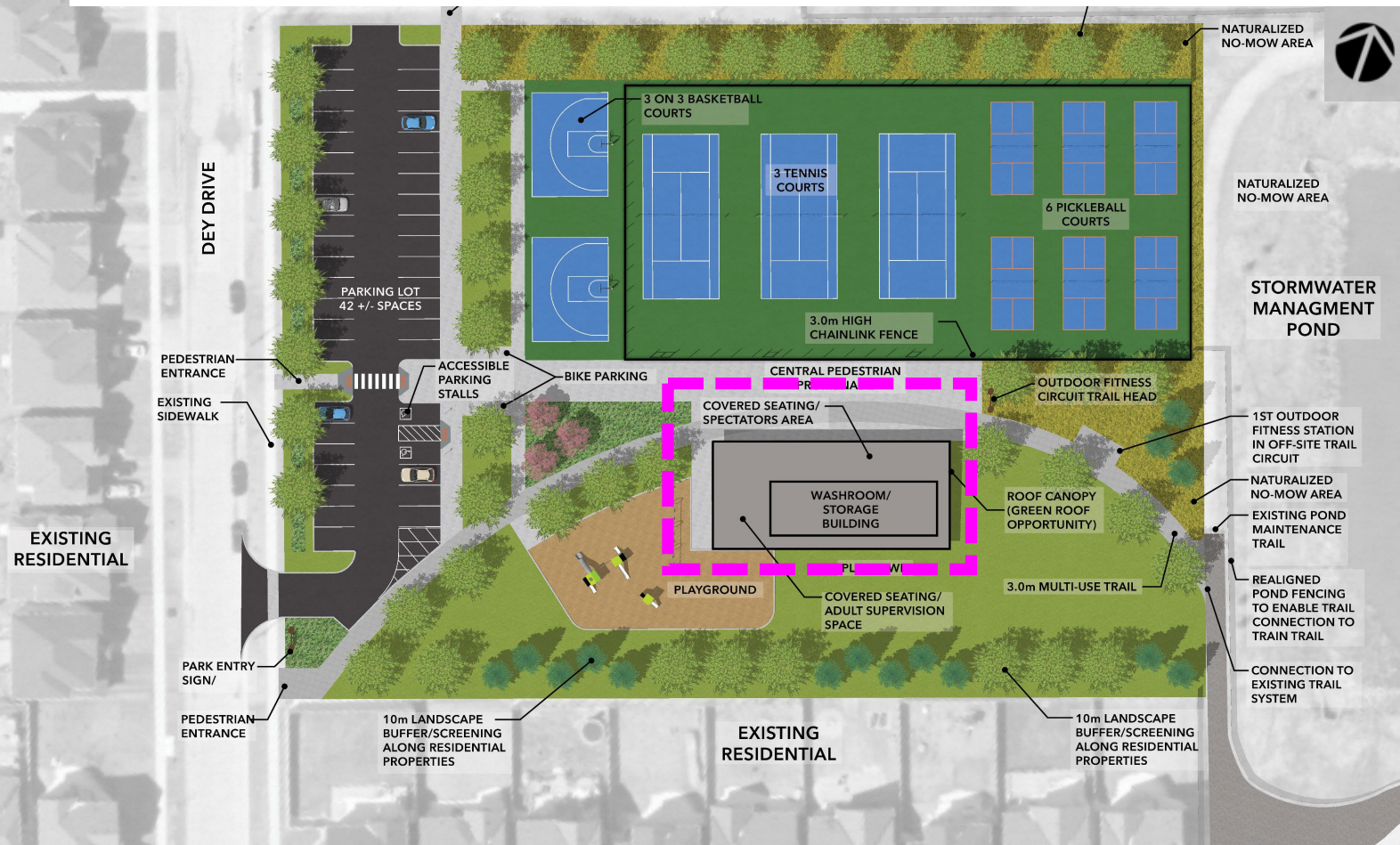
Concept

Concept Overall



Concept Washroom/Storage Building

- Central location with large extended shade canopy (north & west sides)
- Provides separation of playground & play lawn from court uses
- Creates visual buffering & sound attenuation for residents to the south



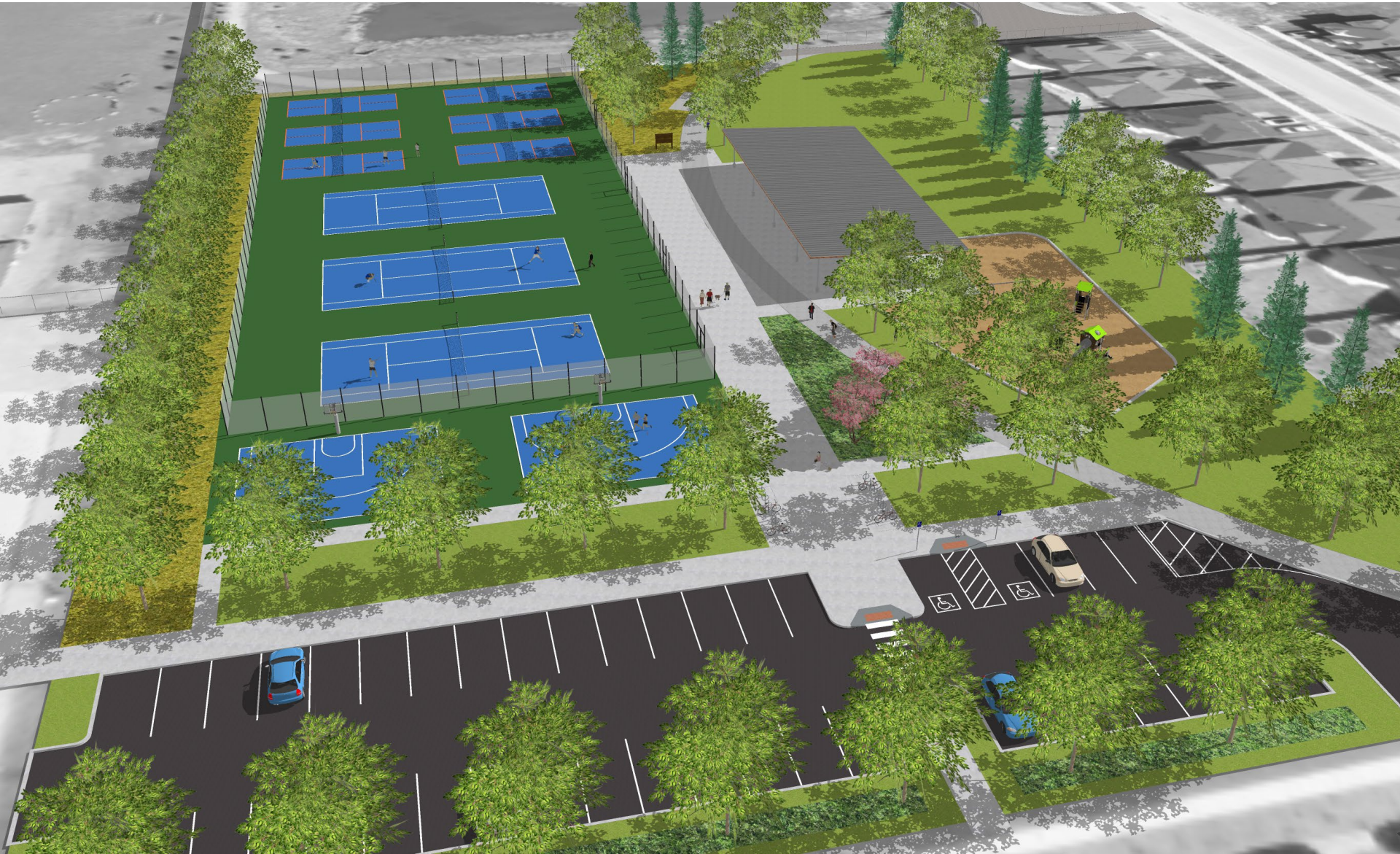
Concept Washroom/Storage Building cont'd

- Approximately 2,150 ft² (200 m²)
- Provides barrier-free washrooms, sports storage, and informal change benches
- Extended roof canopy to provide shaded seating/spectators area & public gathering space
- Opportunity to consider a green roof for environmental and aesthetic benefit



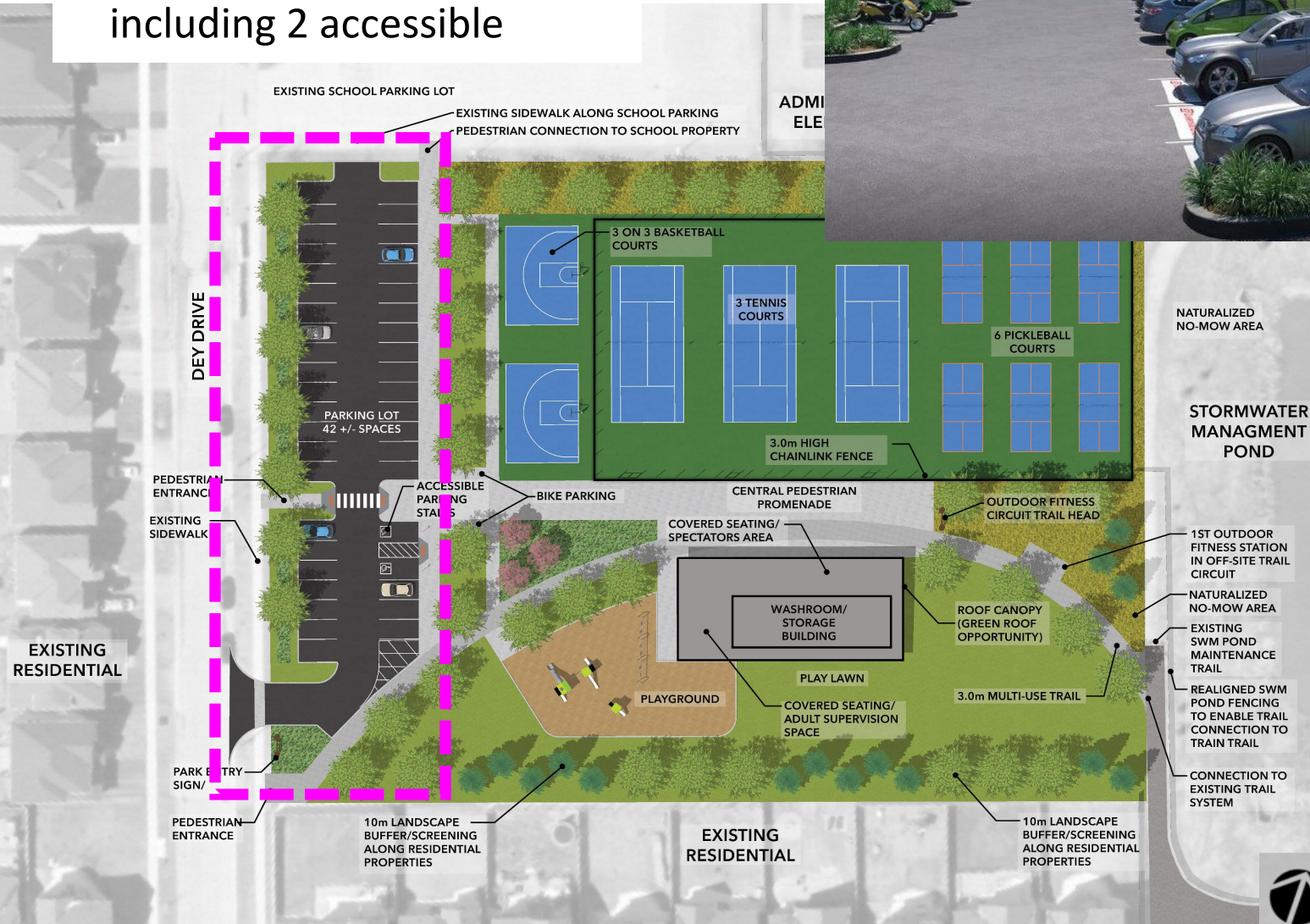
Example: Amenity building at West Orillia Sports Complex

Concept Washroom/Storage Building cont'd



Concept Parking

- 42 +/- approx. parking stalls including 2 accessible

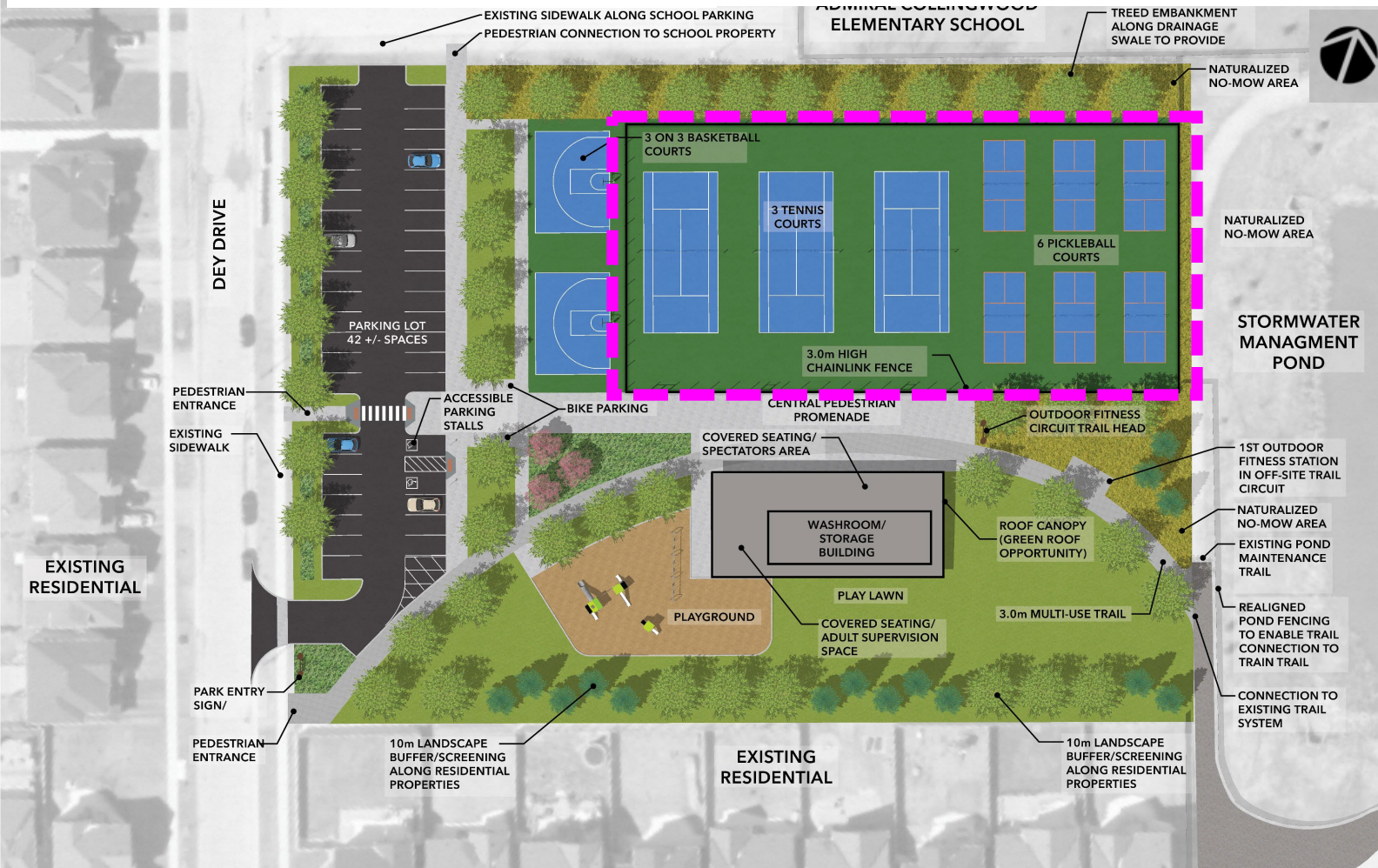


Concept **Parking** cont'd



Concept Tennis/Pickleball Courts

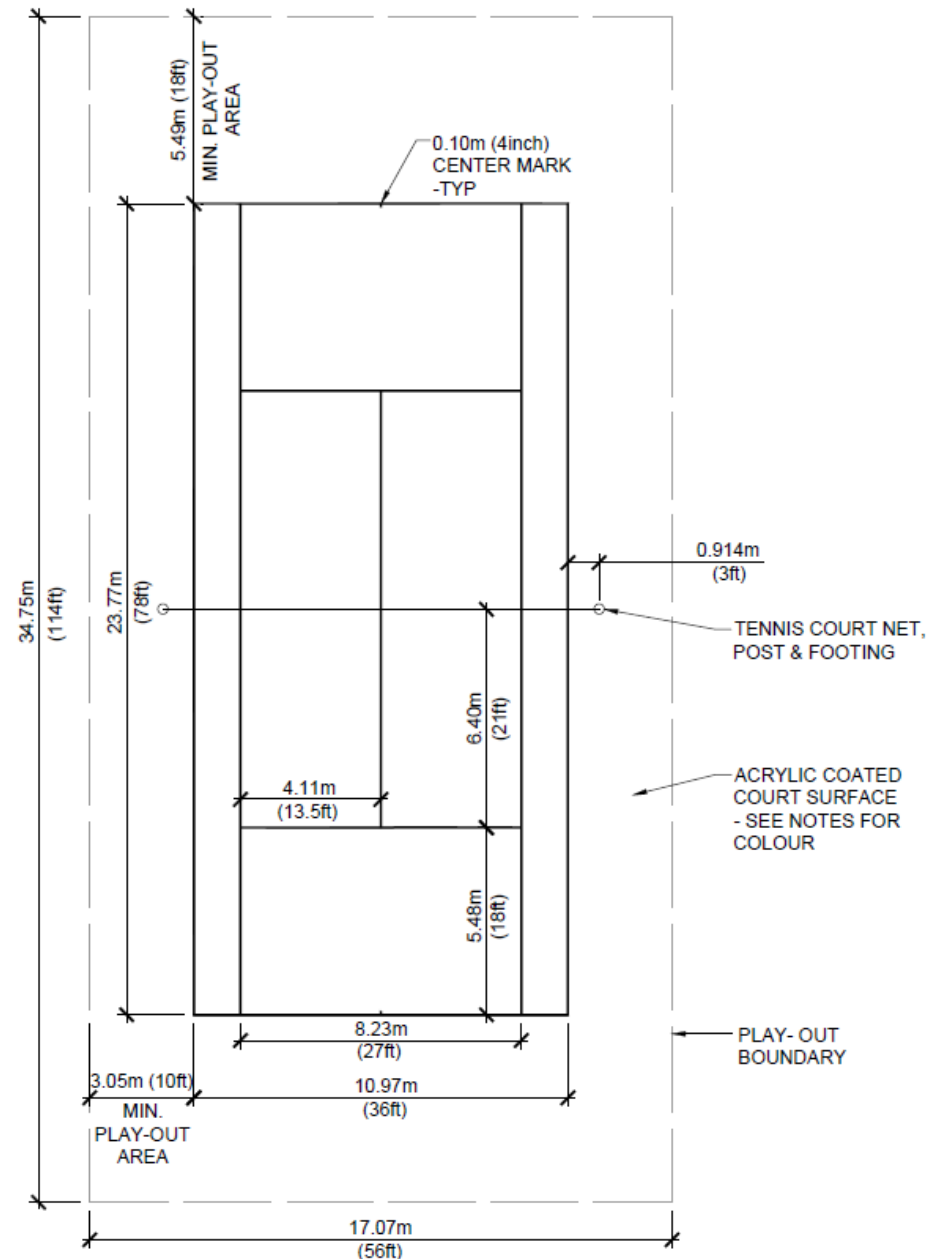
- Fenced enclosure accommodates 3 dedicated tennis courts & 6 dedicated pickleball courts
- Located adjacent to school yard & stormwater management pond and away from residential properties to minimize the sound of court play



Tennis Layout

- **36' x 78'** (10.98m x 23.77m)
court size as per Tennis Canada*
- North-south layout for optimal sun orientation
- Typical Payout:
Ends: 18' (5.49m)
Sides: 10' (3.05m)
- **Wilson-Sheffield Payout:**
Ends: **25.5'** (7.77m)
Sides: **10'** (3.05m)
- End payouts larger to match pickleball & basketball areas (opportunity for seating)

* Reference: Rules of the Court 2022, Tennis Canada

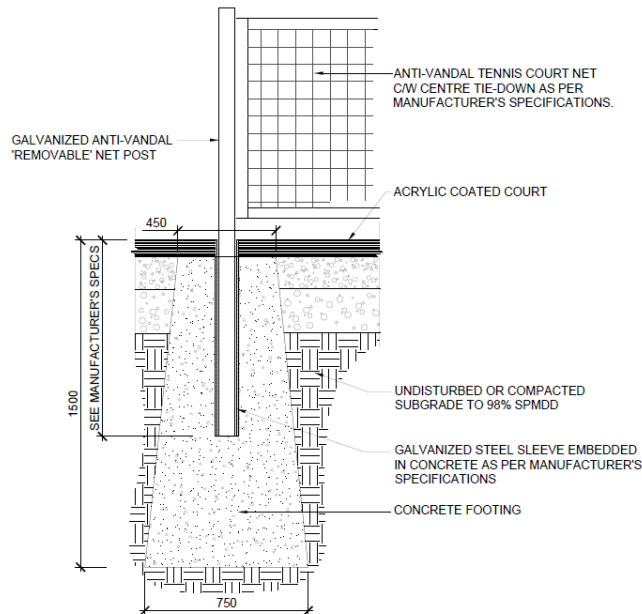


Net System Tennis

- Permanent anti-vandal tennis posts and nets

Posts: 3.5' tall (1.07m)

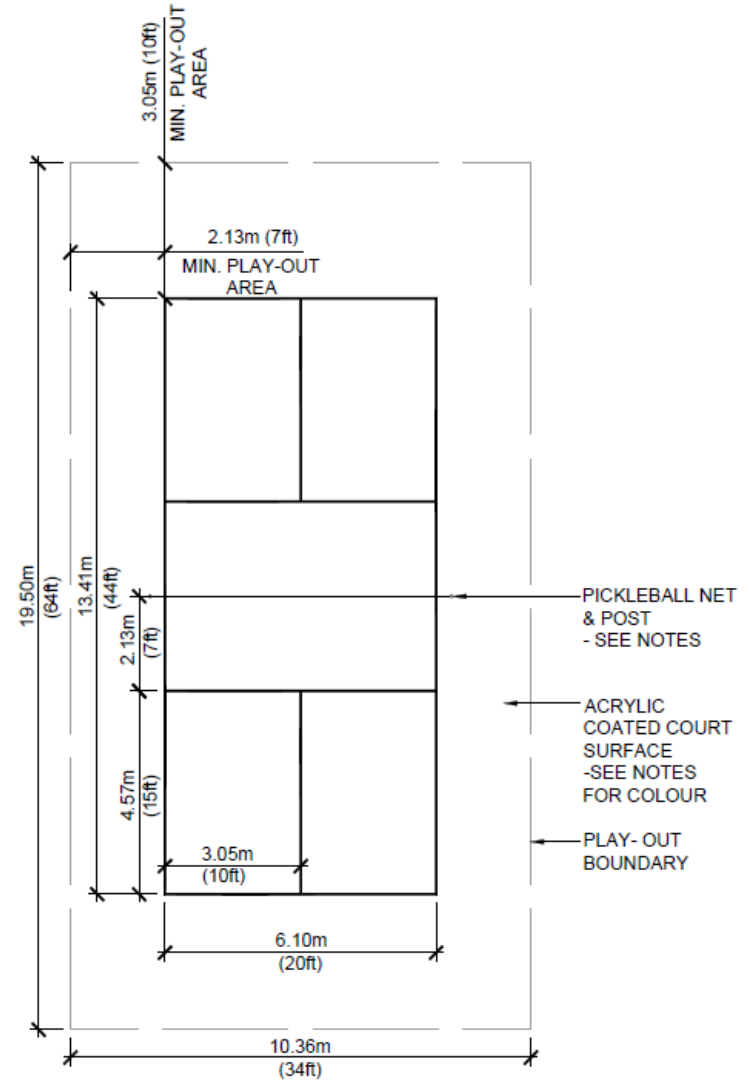
Net: strapped in center at 3' tall (0.91m)



Pickleball Layout

- **20' x 44'** (6.1m x 13.41m) court size as per USA Pickleball*
- North-south layout for optimal sun orientation
- Typical Playout:
 - Ends: 10'** (23.05m)
 - Sides: 7'** (2.13m)

* Reference: USA Pickleball Official Rulebook, International Edition (2022)



Net System Pickleball

- Permanent anti-vandal tennis posts and nets

Posts: 36" tall (0.91m)

Net: strapped in center at 34" tall (0.86m)



Court Surfacing

- Material: **Acrylic coating**
- Product: Plexipave Hardcourt Surfacing System (or approved equal)
- Durable, low maintenance, easy to clean, and provides a consistent ball bounce & grip for sport play

1. Concrete or Asphalt

2. Acrylic Resurfacer

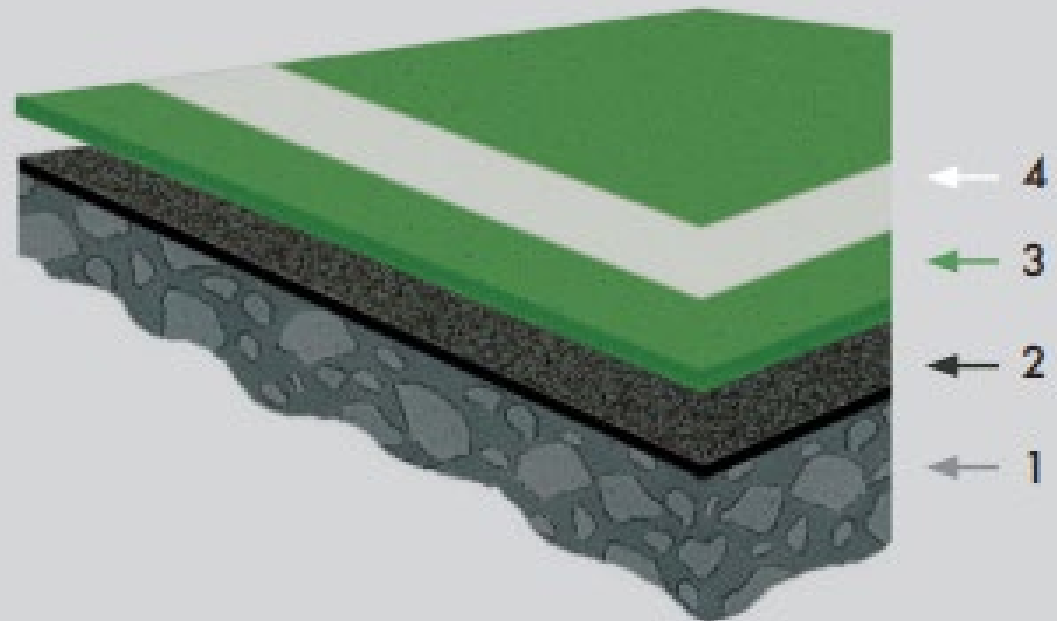
Acrylic Resurfacer blended with approved silica sand

3. Plexipave

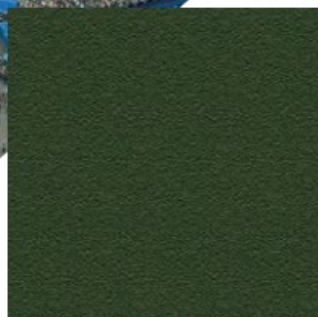
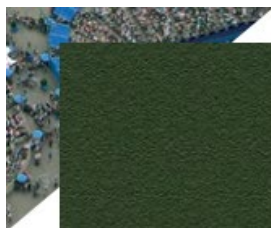
Sand-fortified Plexipave color provides a uniform surface texture and determines the speed of play and traction of the court

4. Line Paint

A heavy bodied acrylic latex



Court Surfacing cont'd



DARK GREEN



MEDIUM GREEN



LIGHT GREEN



DARK BLUE



LIGHT BLUE



PURPLE



RED



GRAY

LINE PAINT

Also available in White and Textured White.



RED



ORANGE



YELLOW



GREEN



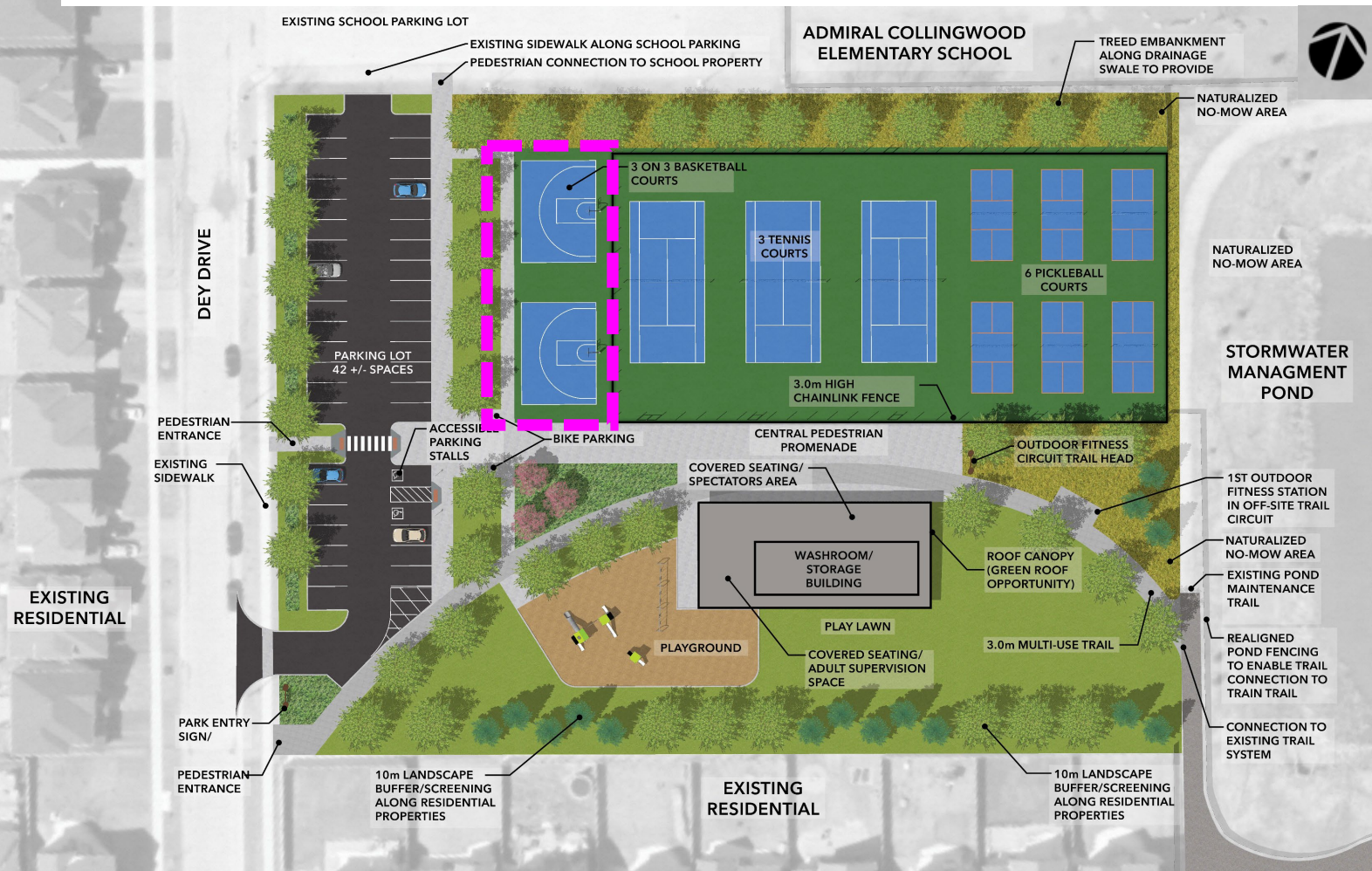
BLUE



BLACK

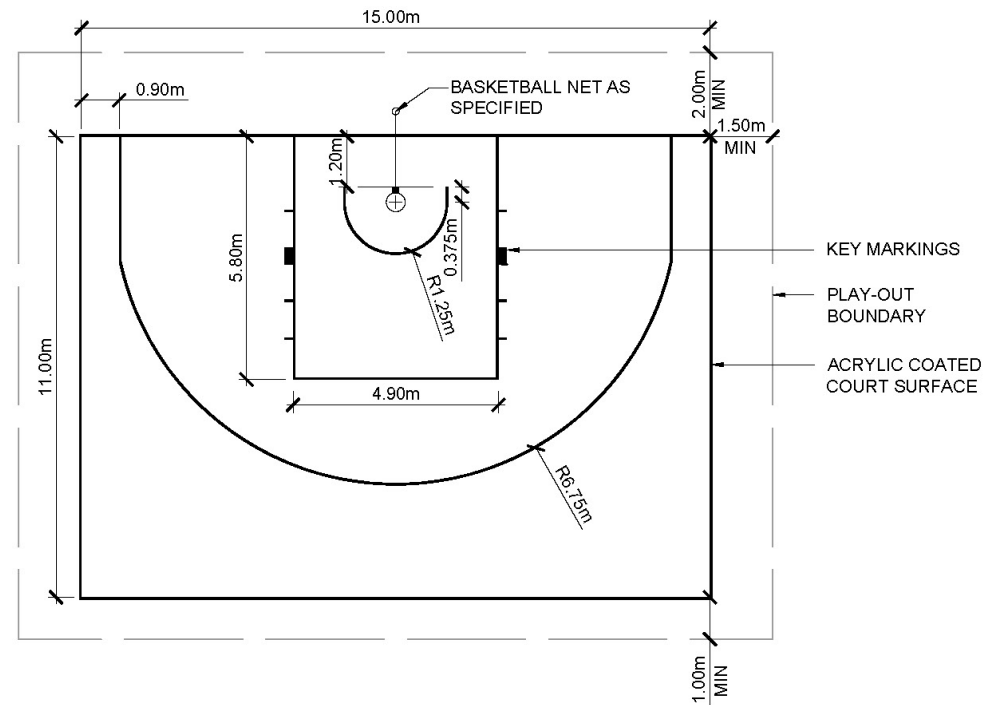
Concept 3 x 3 Basketball

- 2 unfenced 3 on 3 basketball courts along park frontage
- Good visibility for community surveillance
- Accessible for school use



3 x 3 Basketball Layout

- **49.2' x 36'** (15m x 11m)
court size as per FIBA*
(International Basketball Federation)

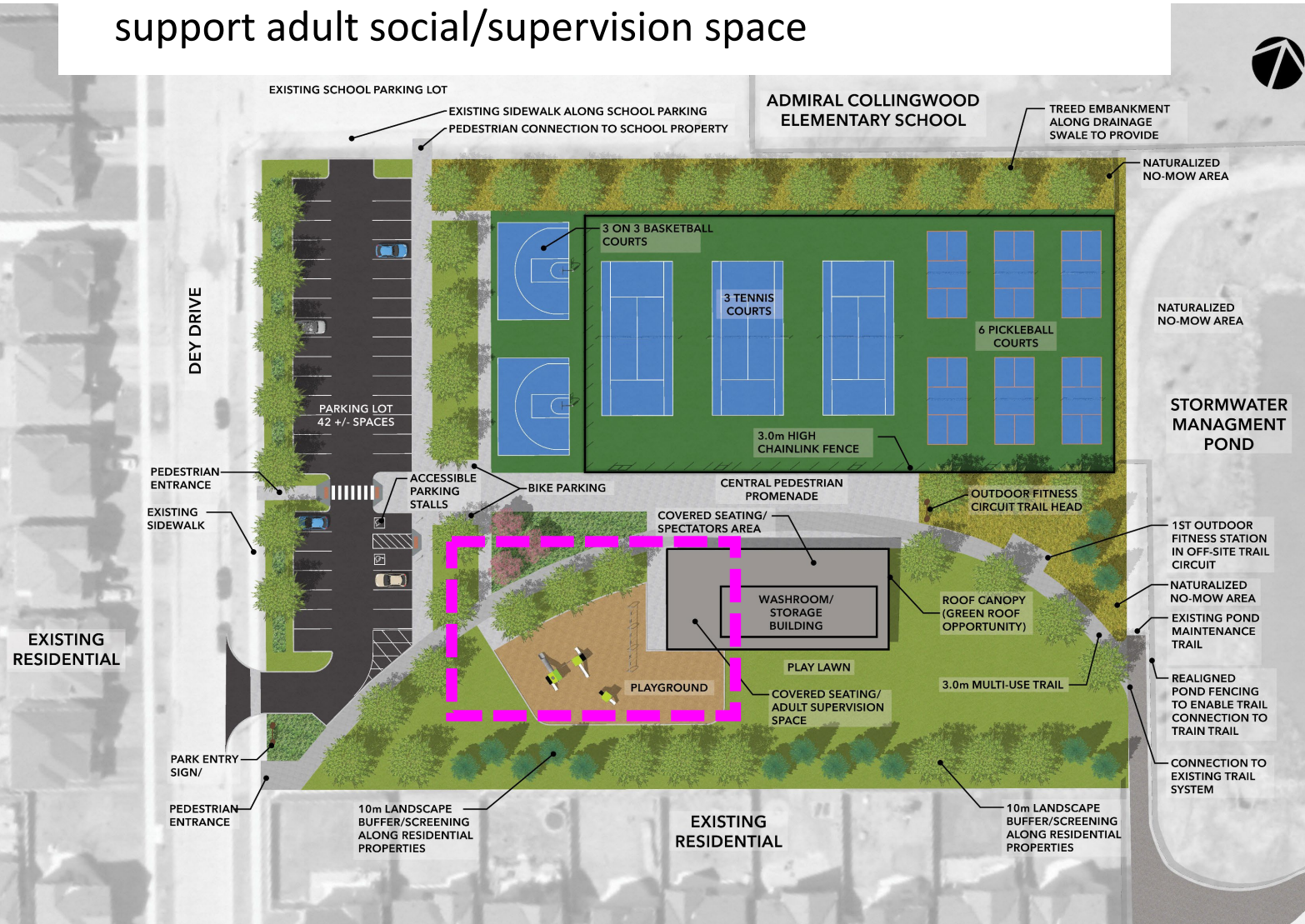


- Typical Playout:
Net End: 6.6' (2.0m)
Front End: 3.3' (1.0m)
Sides: 5' (1.5m)

* Reference: Official 3 x 3 Basketball Rules Official Interpretations (2020)

Concept Playground

- Located adjacent to building and shaded canopy to support adult social/supervision space

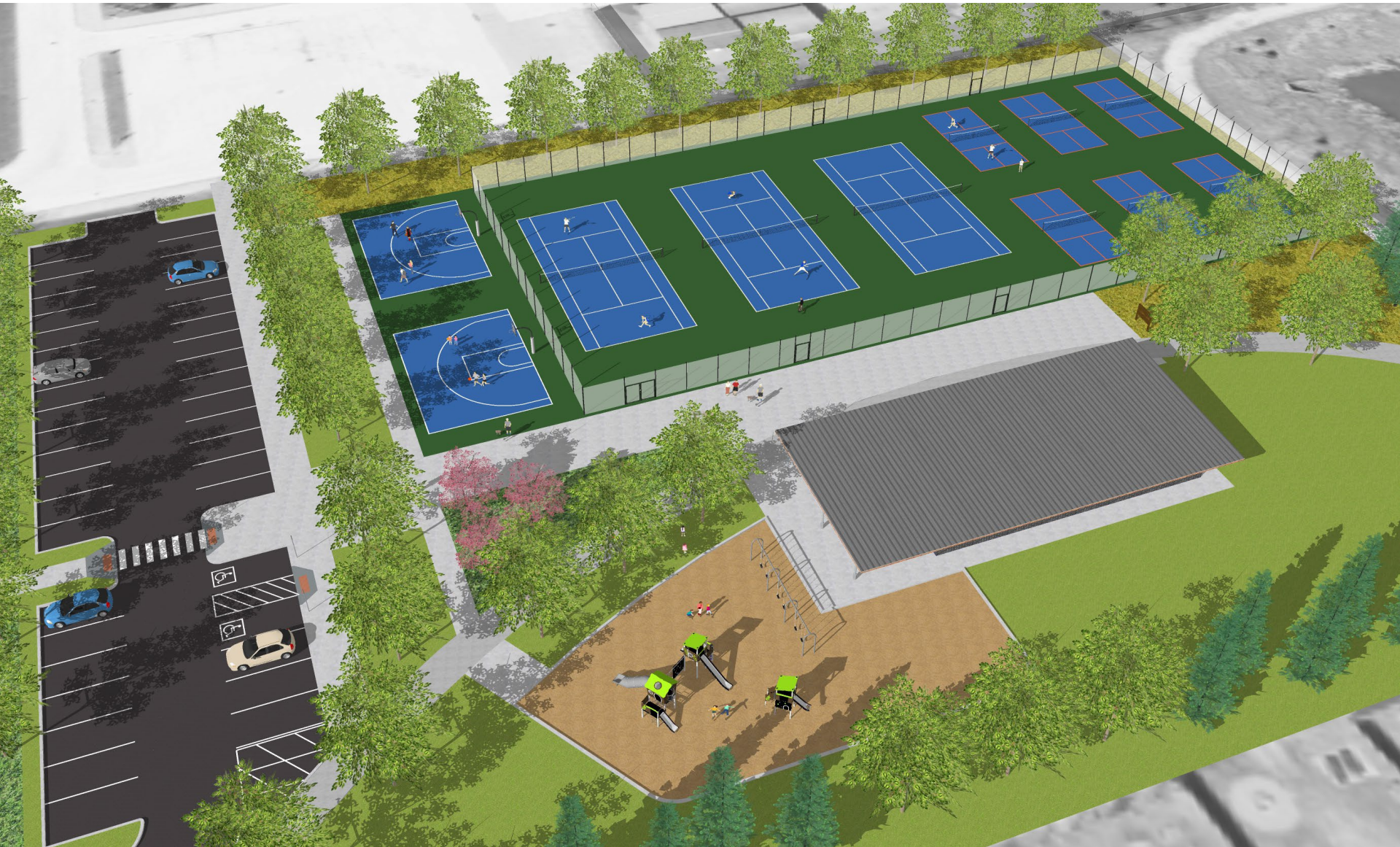


Concept Playground

- Intended for younger children/
families for use by local residents
- CSA & AODA compliant



Concept Playground



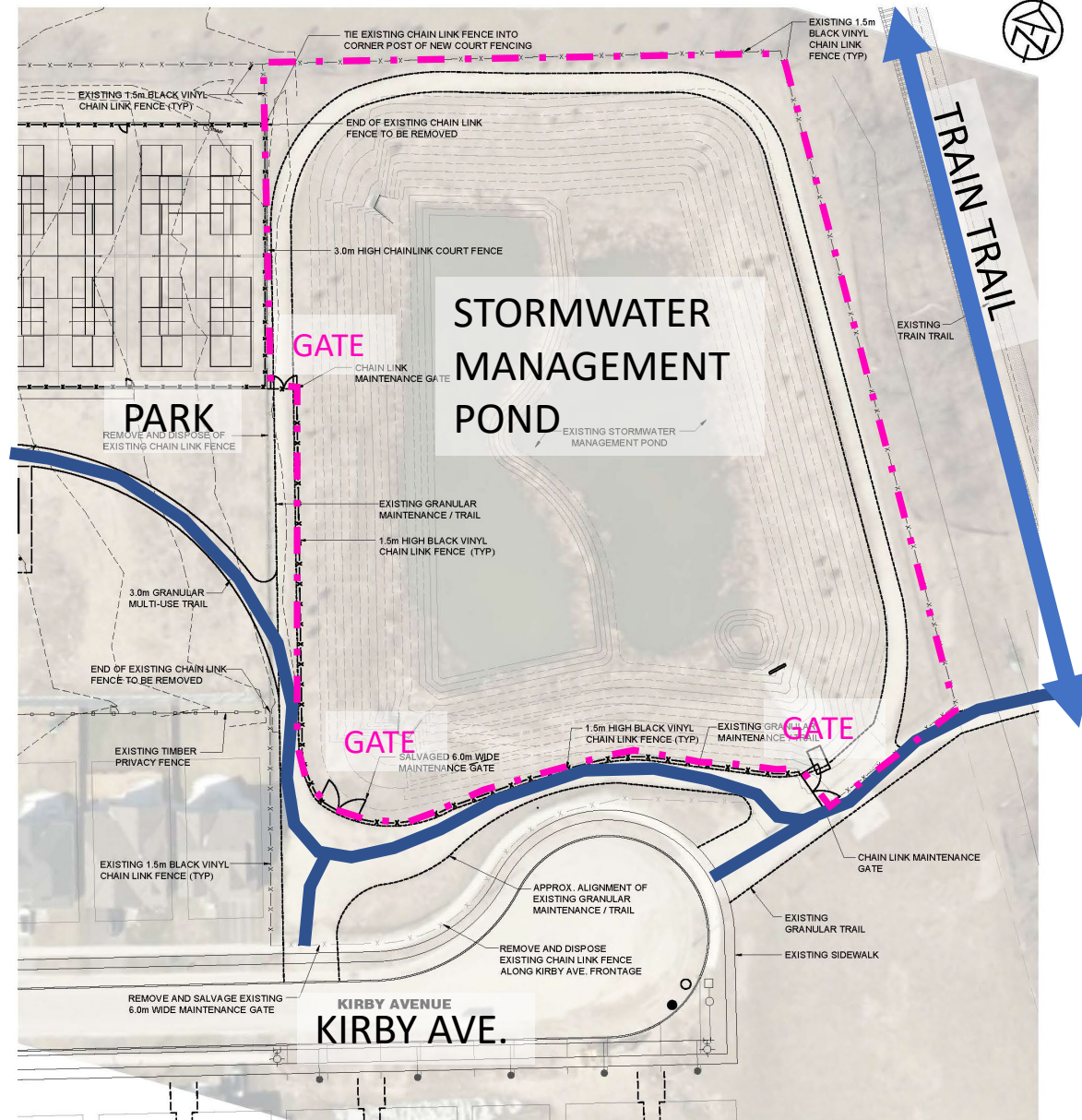
Concept Outdoor Fitness Circuit

- Reconfiguration of existing fencing around stormwater management pond to allow direct trail access from the park to the Train Trail



Fitness Circuit Pond Access

- Move portion of fencing to inside of pond to allow public access to existing granular maintenance trail
- Provide 3 pond maintenance gates



Fitness Circuit Pond Access cont'd



Fitness Circuit Proposed Circuit Layout



- Outdoor fitness circuit/ trail with calisthenic workout stations at beneficial intervals
- Opportunity for looped connection back to Wilson-Sheffield Park through future development site (south of Kirby Avenue)

Fitness Circuit Examples



Questions ?