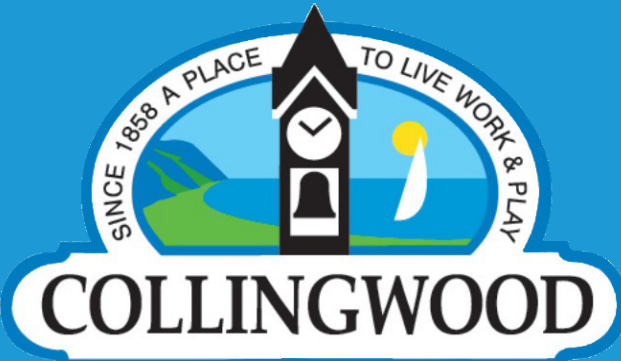
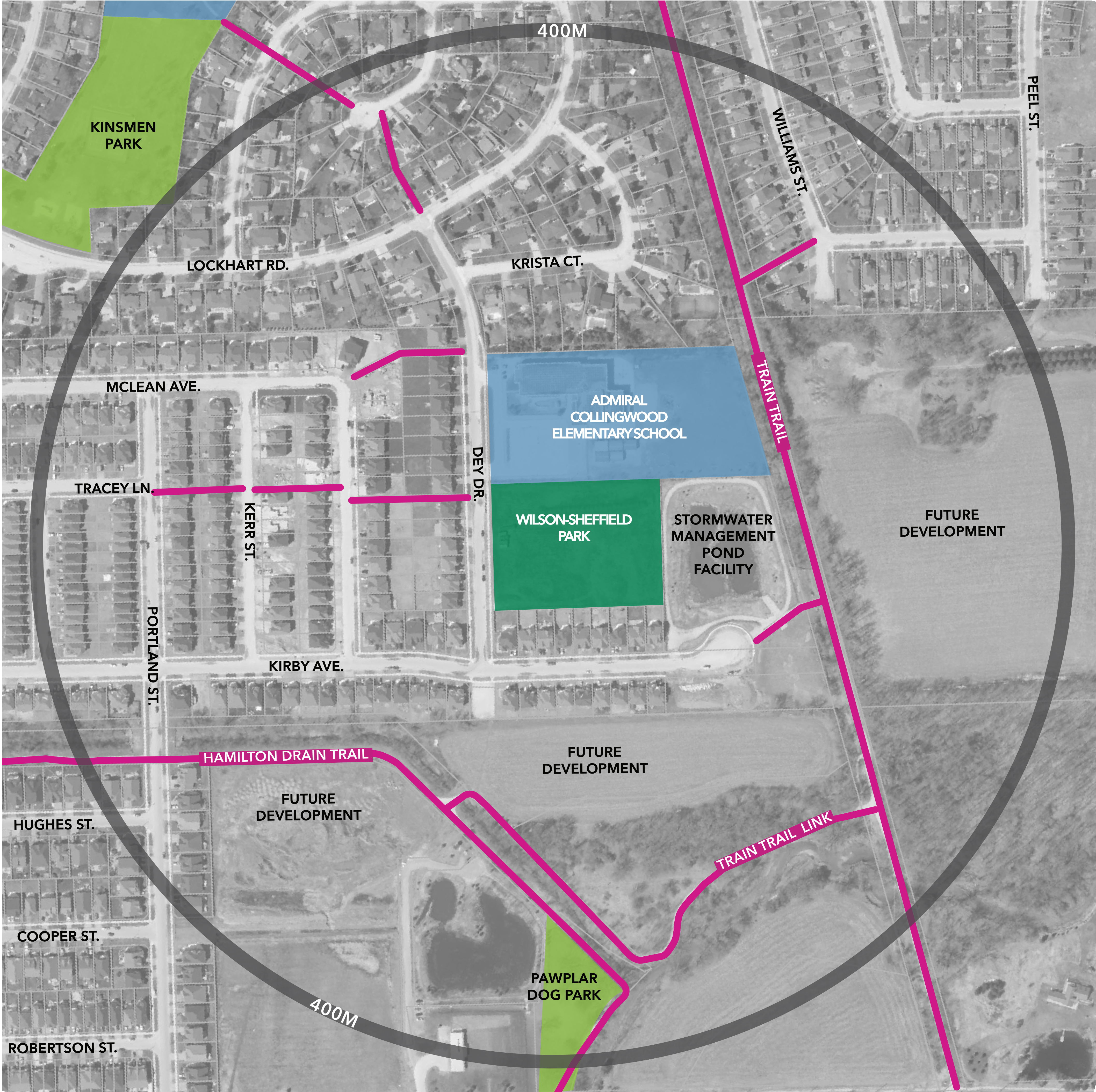


WILSON-SHEFFIELD PARK

Collingwood, Ontario
March 2023



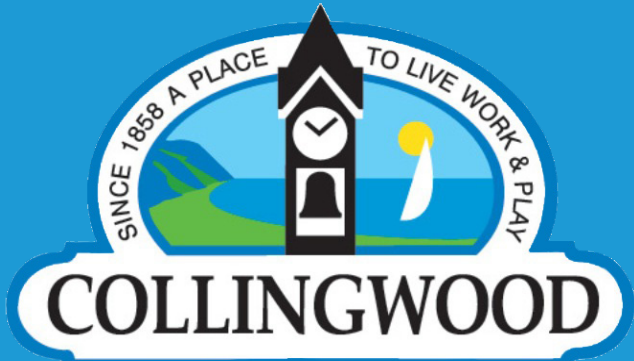
NEARBY PARKS & TRAILS 400m



LEGEND	
	COMMUNITY PARK
	NEIGHBOURHOOD PARK
	EXISTING TRAILS AND WALKWAYS
	SCHOOL

WILSON-SHEFFIELD PARK

Collingwood, Ontario
March 2023



DESIGN OBJECTIVES



Provide a centralized washroom building for all park users that includes sports storage, informal change opportunities, localized area lighting, and protection from the elements (canopy/cover)



Create a unifying outdoor public gathering, spectating, and wayfinding space adjacent to the building (with shade/ rain protection) that can be used passively or for organized events



Incorporate on-site parking to accommodate general park users, support sport facilities/events, and provide opportunity for ongoing & future discussions with SCDSB regarding overflow parking



Provide meaningful court facilities to support the growth of tennis and pickleball as per recommendations of Collingwood's Community Based Strategic Plan & the Parks, Recreation, & Culture (PRC) Master Plan adopted by Council



Provide adequate supporting amenities to facilitate convenient day-to-day access to tennis and pickleball for the public and sports groups and to support organized events (e.g., league play, tournaments, etc.)



Provide 3 on 3 basketball facilities for skills development and to support youth recreation



Locate court facilities adjacent to compatible neighbouring uses and in consideration of sound attenuation for nearby residential properties



Provide appropriate site furnishings to support active transportation and park amenities (bike racks, seating, waste receptacles, signage, etc.)



Design flexibility to explore future site integration/shared-use opportunities between the park and Admiral Public School for mutual benefit

WILSON-SHEFFIELD PARK

Collingwood, Ontario
March 2023



DESIGN OBJECTIVES



Provide a children's playground that accommodates a diversity of age groups, skill levels, and abilities and ensure compliance with safety standards



Encourage physical and social interaction for all ages and abilities and ensure that inclusiveness and accessibility meet or exceed accessibility regulations (CSA & AODA)



Incorporate public art opportunities, where possible



Maintain open lawn space within the park for informal active and passive activities (play lawn)



Tree planting to provide microclimate benefits (shade, wind buffers, habitat, spatial definition, etc.), as well as screening/sound attenuation along residential interfaces



Integrate naturalized areas from the adjacent stormwater management pond into the park for a complementary aesthetic and to reduce maintenance, create habitat, and expand environmental benefits



Establish an outdoor fitness circuit along the adjacent trail network with Wilson-Sheffield Park providing trailhead parking, wayfinding, and user amenities



Reconfigure existing stormwater management pond fencing to create a direct connection to the Train Trail and incorporate a trailhead within the park



PARKING LOT



3 ON 3 BASKETBALL COURT



TENNIS COURTS



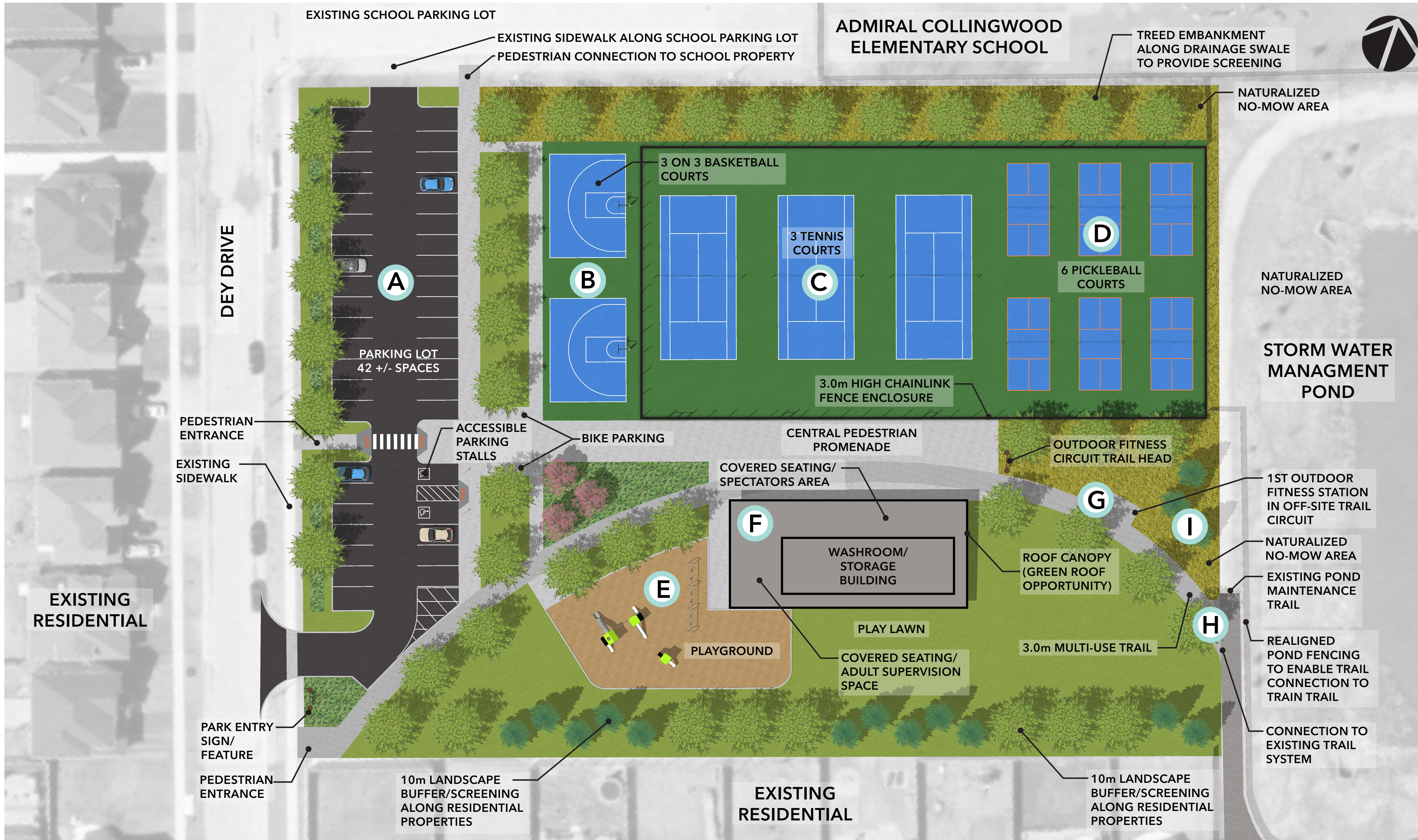
PICKLEBALL COURTS



PLAYGROUND



WASHROOM/STORAGE BUILDING



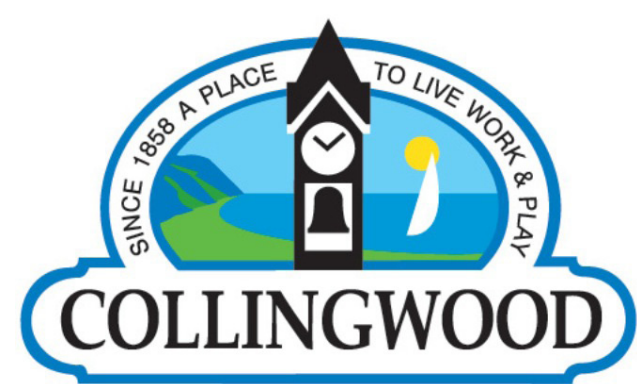
TRAILHEAD FOR OUTDOOR FITNESS CIRCUIT



CONNECTION TO TRAIL NETWORK



NATURALIZED NO-MOW AREA



Wilson-Sheffield Park

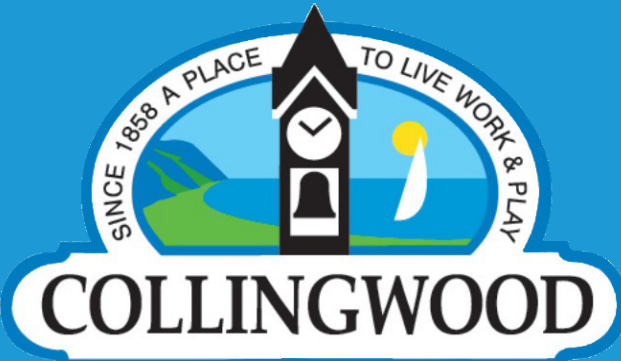
PARK CONCEPT

Date: March 9, 2023

Scale: 1:300 at 24" x 36"

WILSON-SHEFFIELD PARK

Collingwood, Ontario
March 2023

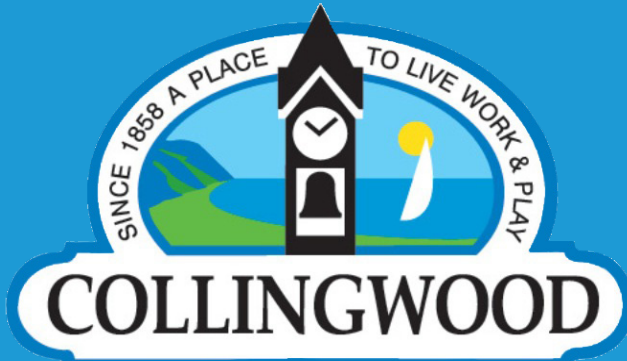


PROPOSED OUTDOOR FITNESS CIRCUIT

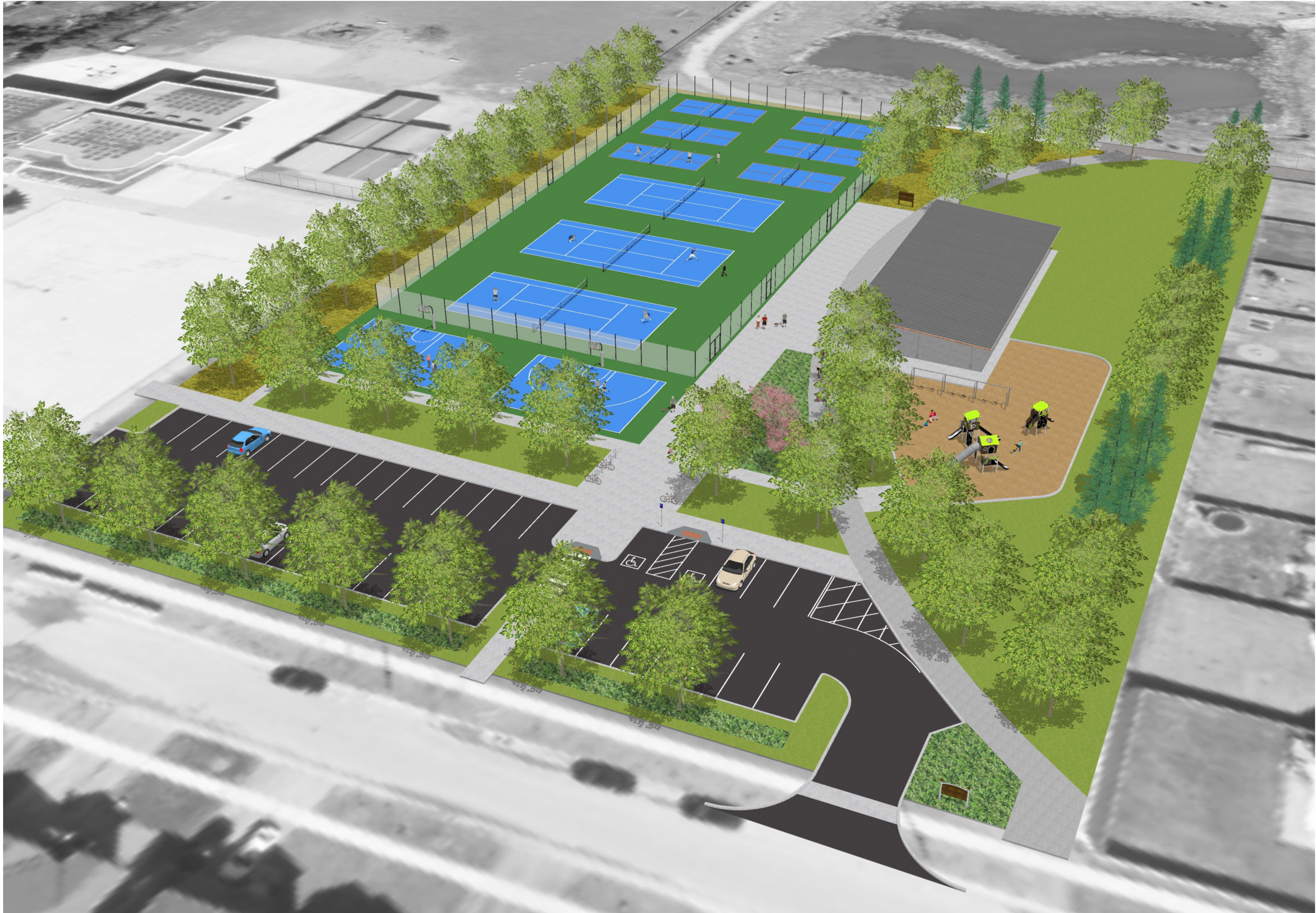


WILSON-SHEFFIELD PARK

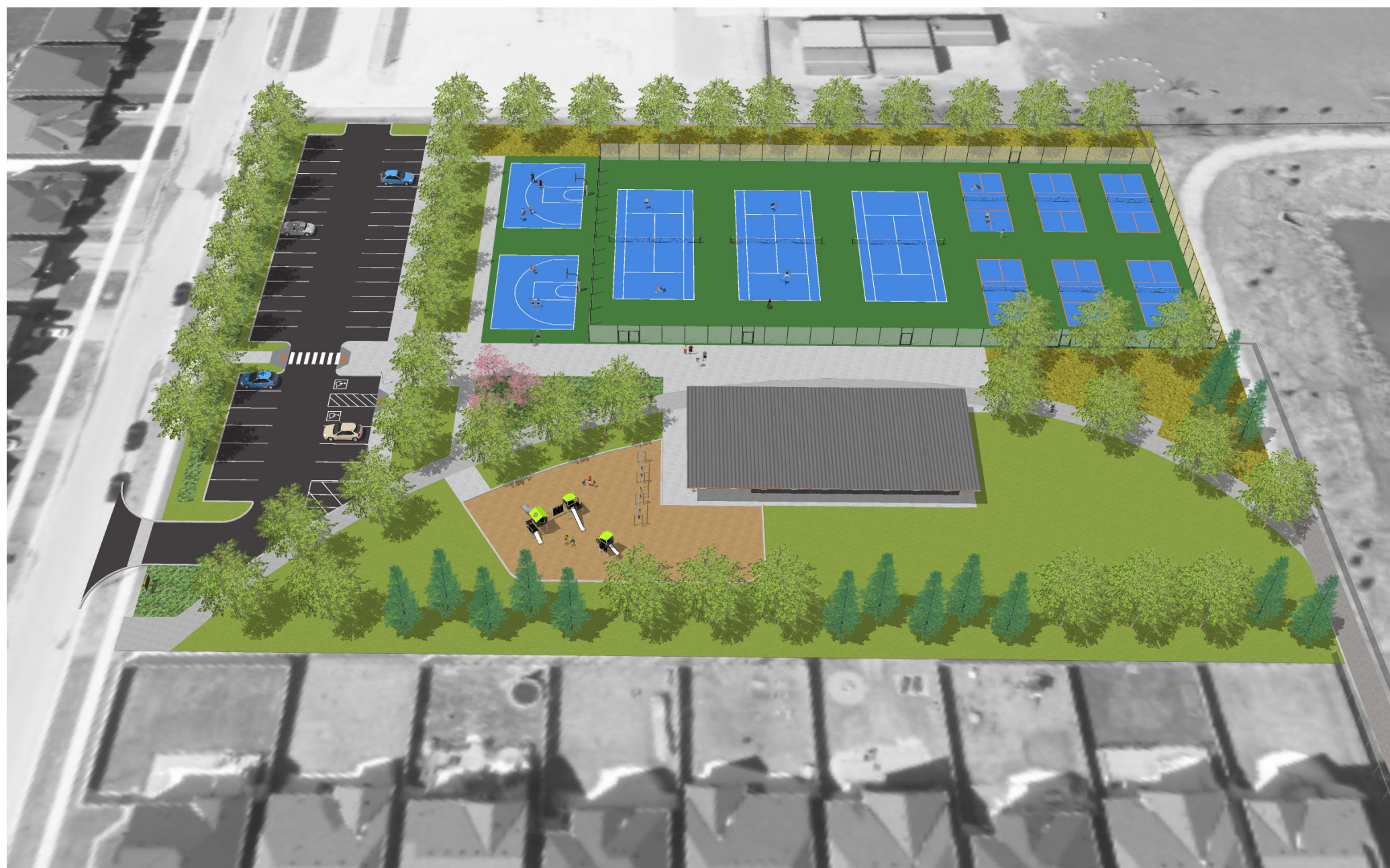
Collingwood, Ontario
March 2023



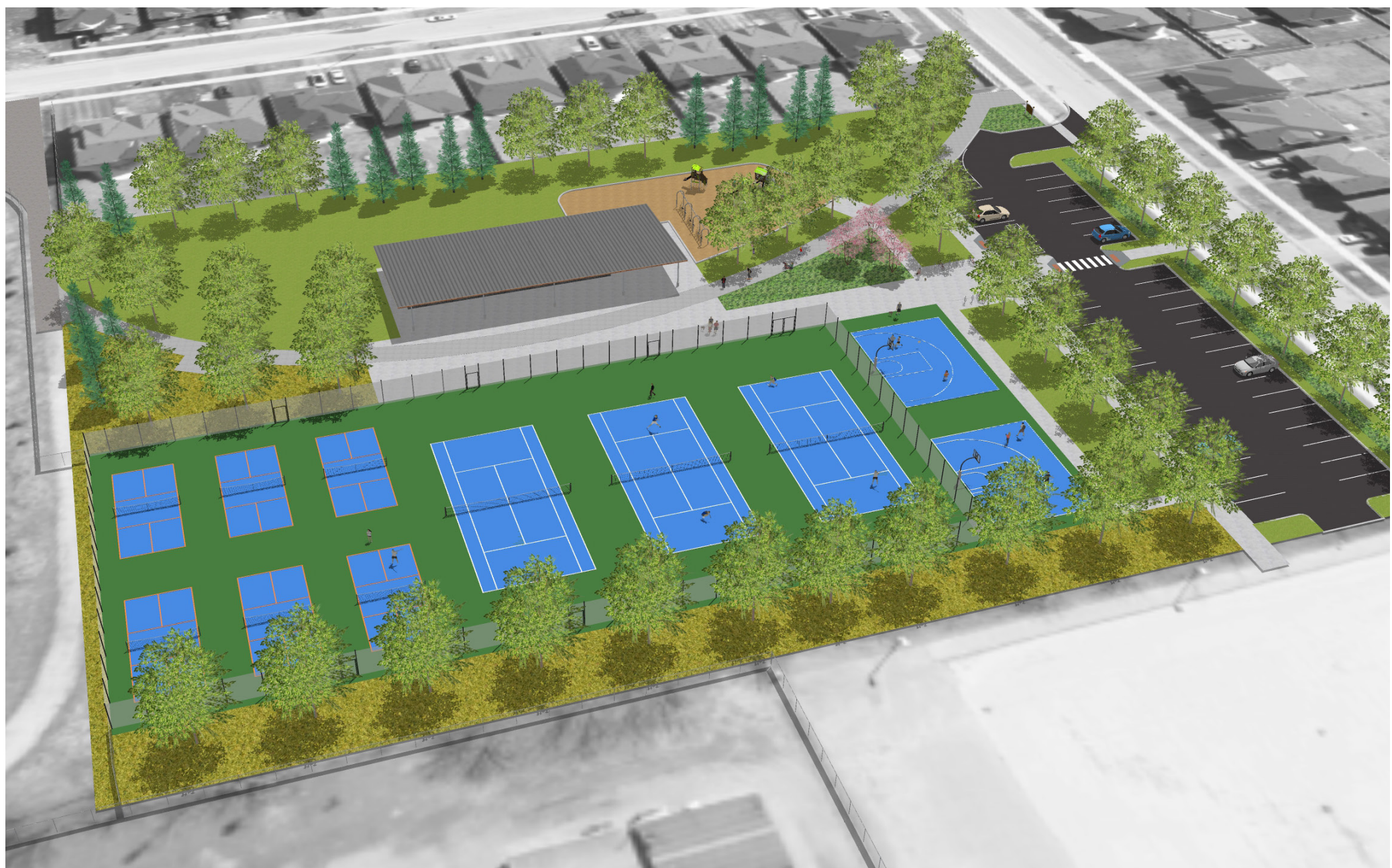
AERIAL PERSPECTIVES



VIEW FROM DEY DRIVE



VIEW FROM KIRBY AVENUE



VIEW FROM ADMIRAL PUBLIC SCHOOL