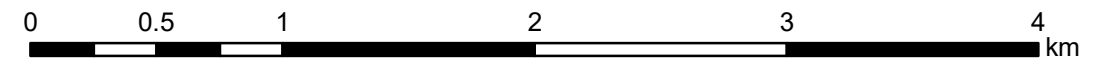
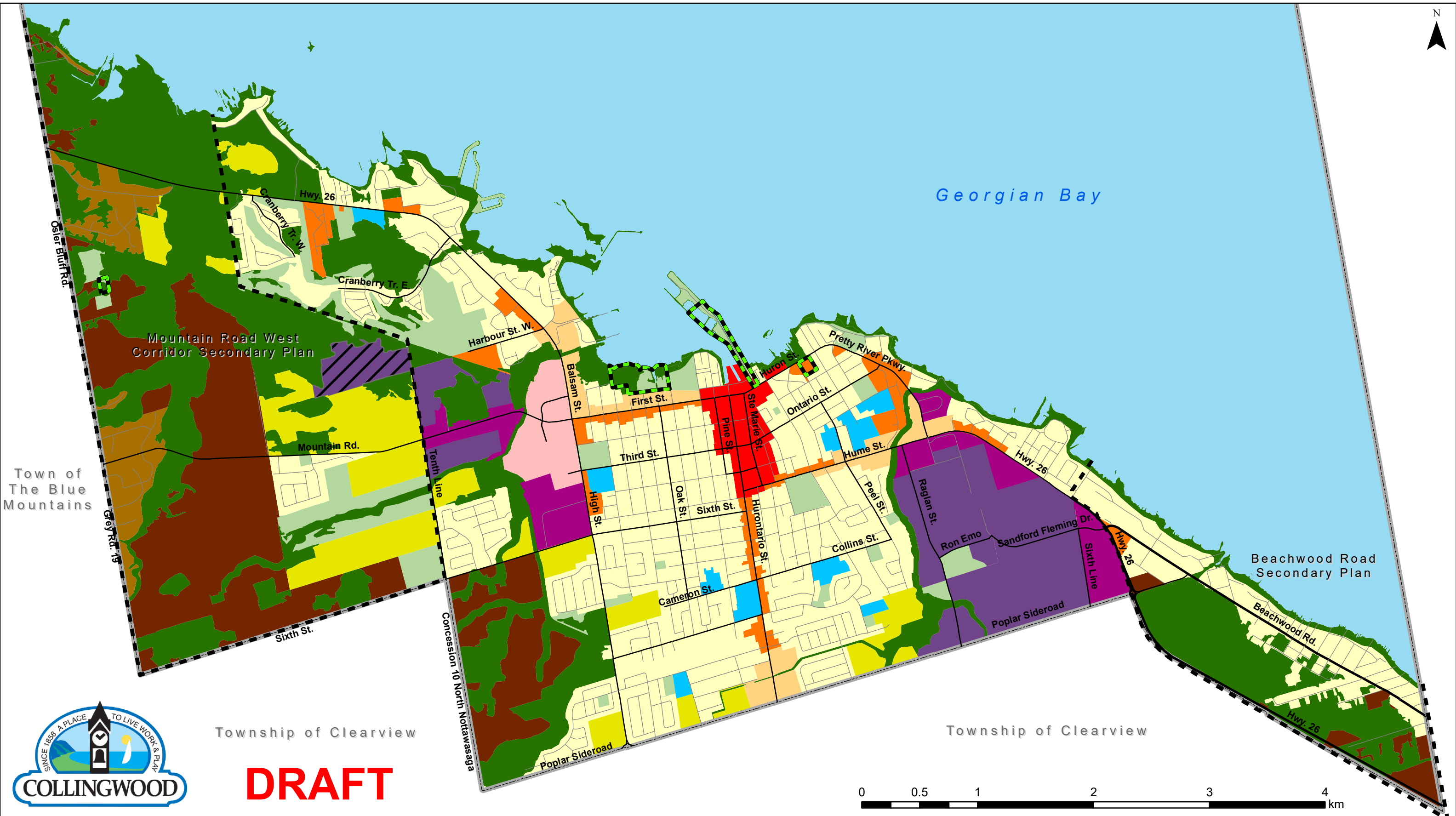


**Official Plan of the
Town of Collingwood
Schedule '1'
Growth Management Plan**

- Employment Areas
- Strategic Growth Areas
- Residential Communities
- Greenlands System
- DGA - Employment Areas
- DGA - Residential Communities
- Rural/Agricultural
- Delimited Built-up Area Boundary
- Municipal Boundary

DRAFT

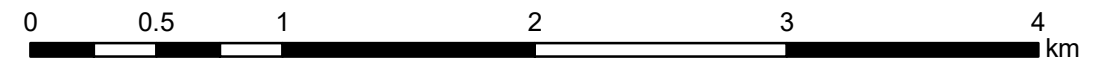




Township of Clearview

Township of Clearview

DRAFT



**Official Plan of the
Town of Collingwood
Schedule '2'
Land Use Plan**

- | | | | |
|------------------------|-------------------------------|---------------------------|--------------------------------|
| Community Areas | Strategic Growth Areas | Employment Areas | Rural/Agricultural Area |
| Existing Neighbourhood | Downtown | Prestige Employment | Rural Residential |
| Future Neighbourhood | Mixed Use Corridor I | General Employment | Rural |
| Major Institutional | Mixed Use Corridor II | Waste Disposal Industrial | Greenlands System |
| | Regional Commercial District | | Environmental Protection |
| | | | Parks and Open Space |

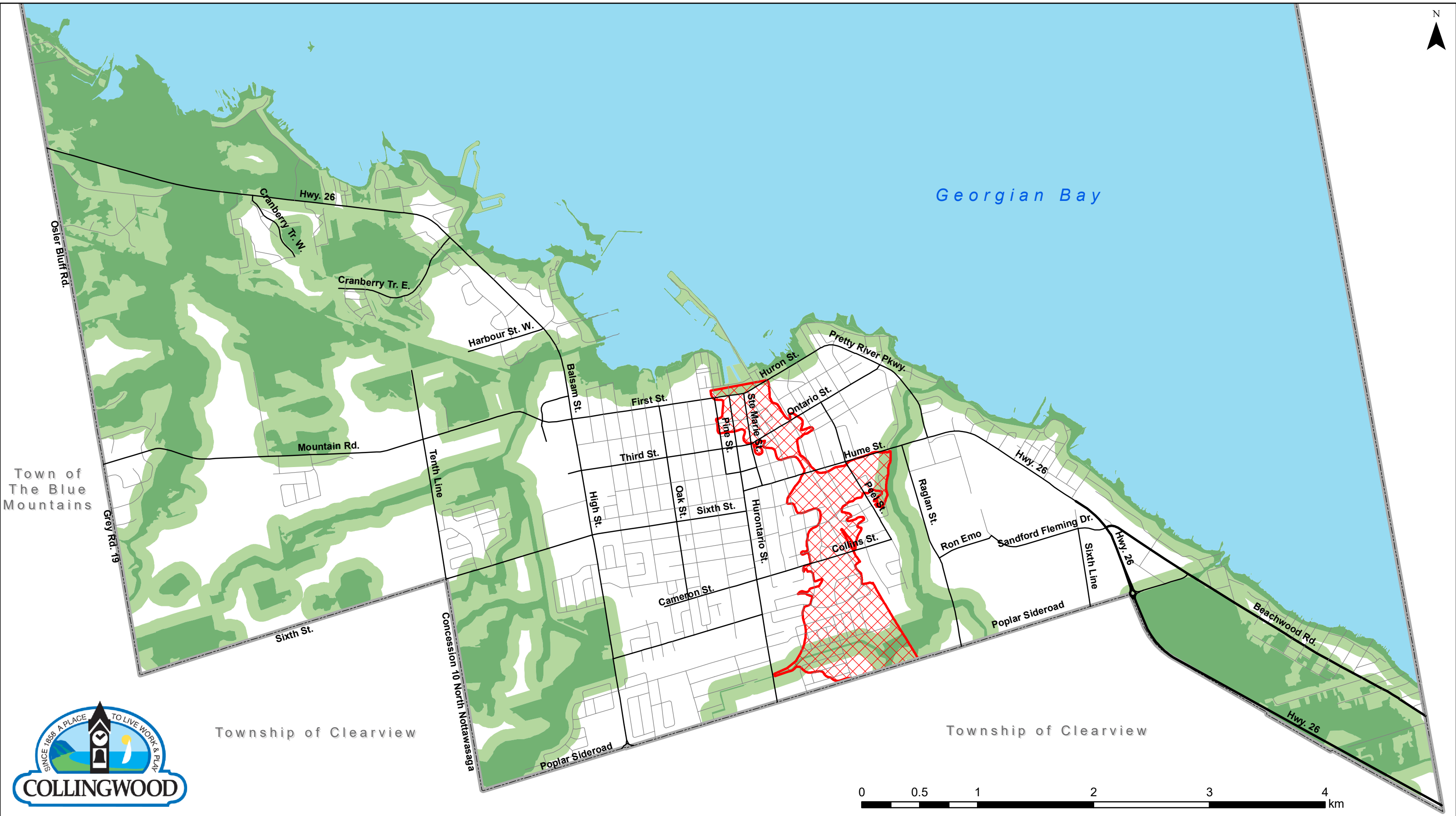
- Municipal Boundary
 - Secondary Plan Area
 - Inactive Private Landfill
- Note: Refer to Schedule 7 of this Plan for Area Specific Policies that supplement the land use designations on this Schedule.*

The Planning Partnership





PLAN Natural Heritage

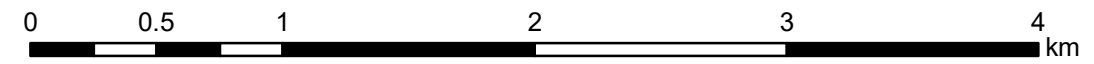


Plan-It Geographical



**Official Plan of the
Town of Collingwood
Schedule '3'
Natural Heritage System**

-  Natural Heritage System
-  Adjacent Lands Overlay
-  Pretty River Flood Fringe
-  Municipal Boundary



DRAFT

The Planning Partnership

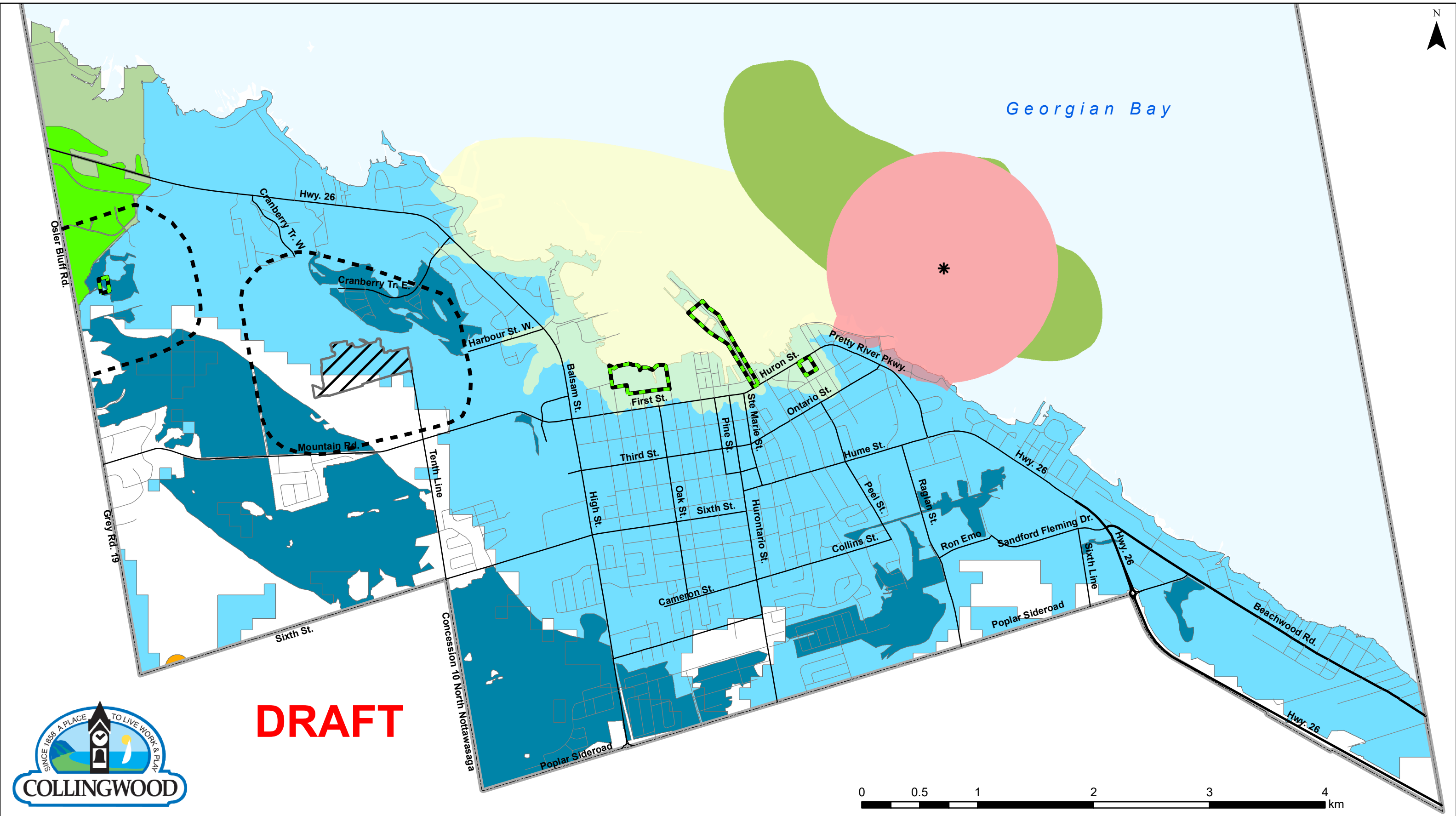
PLAN B Natural Heritage



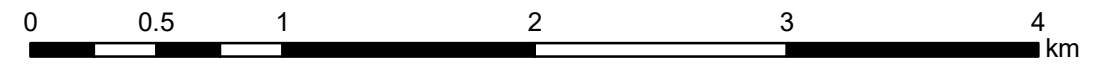
Plan-It Geographical



Georgian Bay

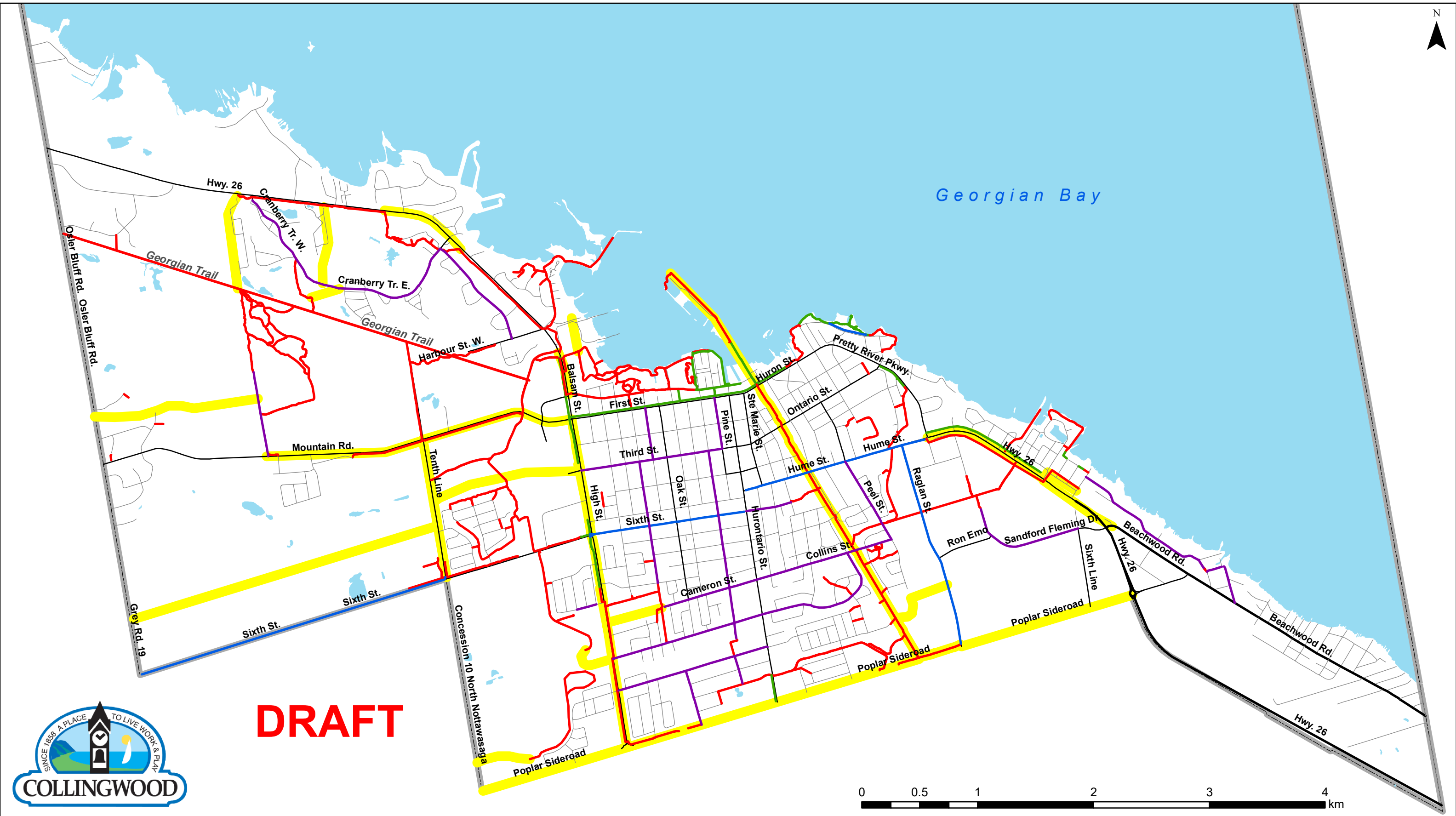


DRAFT

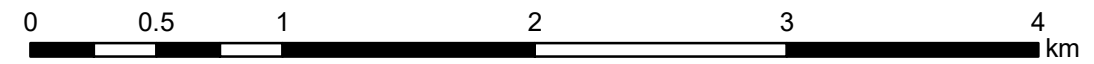


Official Plan of the Town of Collingwood Schedule '4' Landfills/Source Water Protection

- | | | |
|--------------------------------|--|---------------------------------|
| Intake Protection Zones | Wellhead Protection Area A (WHPA-A) | Active Landfill |
| IPZ-1 | Significant Groundwater Recharge Area (SGRA) | Inactive Private Landfill |
| IPZ-2 | Highly Vulnerable Aquifer (HVA) | Waste Disposal Assessment Areas |
| IPZ-3 | Significant Groundwater Recharge Area | Municipal Boundary |
| Surface Water Intake | Highly Vulnerable Aquifer | |
- Saugeen, Grey Sauble, Northern Bruce Peninsula Source Protection Plan**



DRAFT

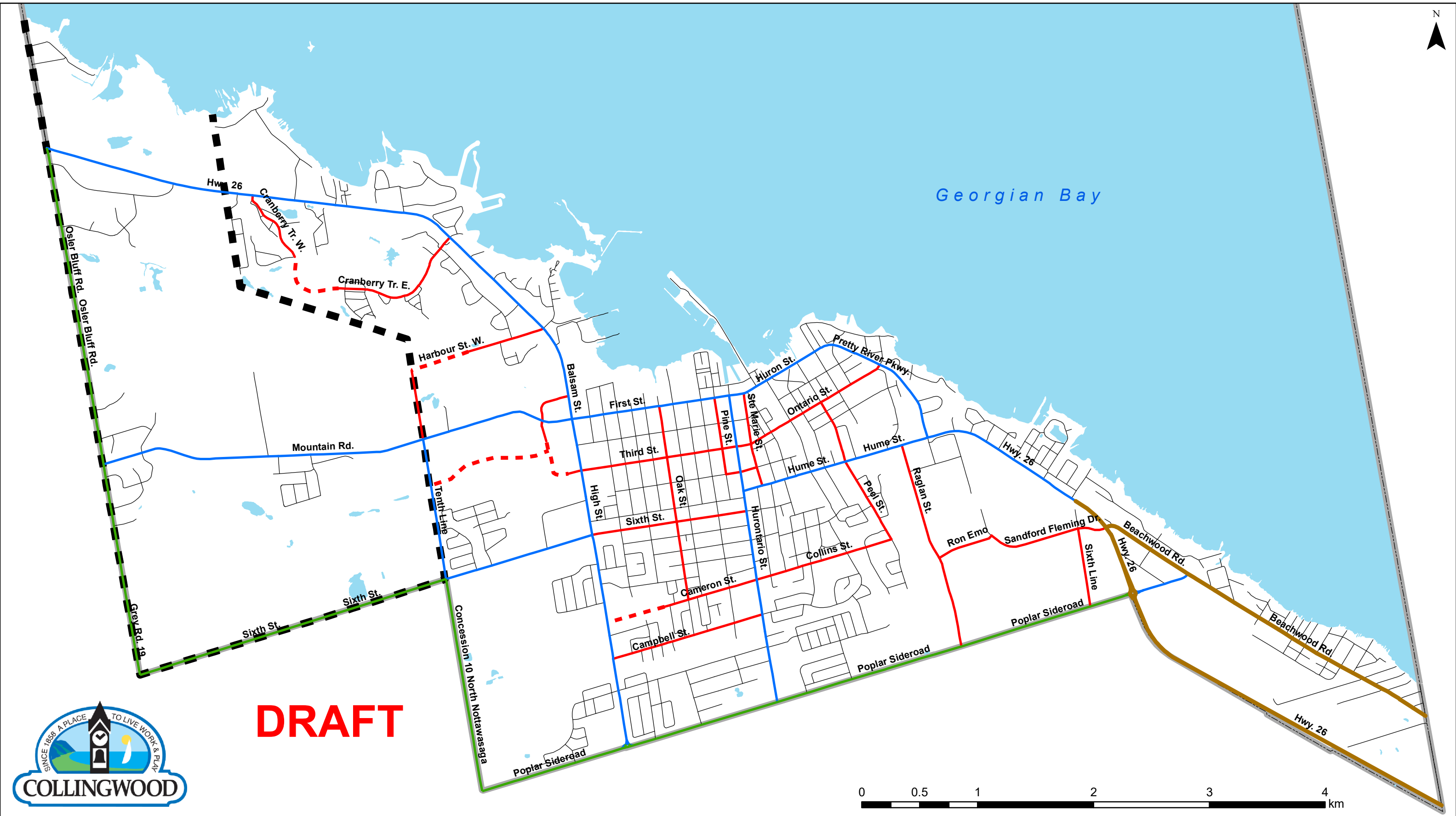


**Official Plan of the
Town of Collingwood
Schedule '5'
Active Transportation Plan**

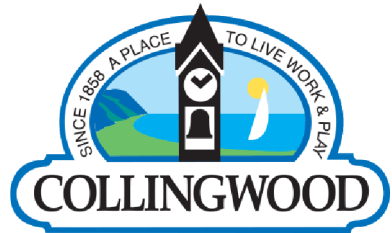
- Off-road Trail
- Multi Use Sidewalk
- Dedicated Bike Lane
- Bike Friendly Road Route (Current and Future)
- Future Trail/Trail Improvements
- Municipal Boundary

The **Planning** Partnership

PLAN Natural Heritage *Plan-It Geographical*

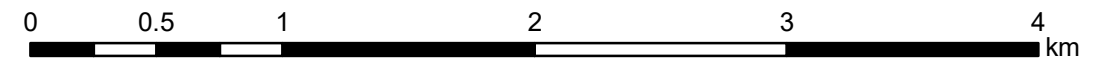


DRAFT



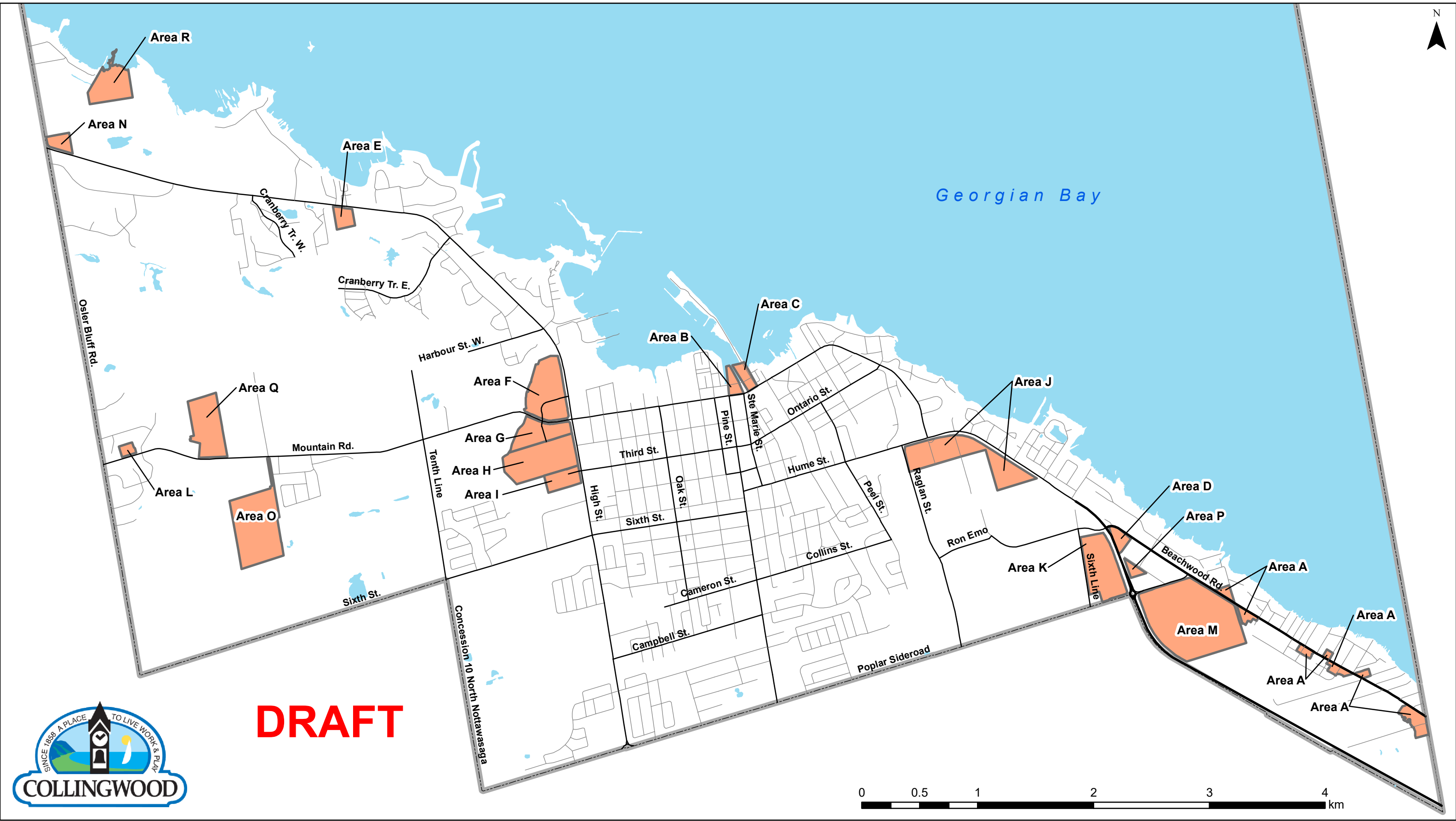
**Official Plan of the
Town of Collingwood
Schedule '6'
Transportation Plan**

- Ministry of Transportation Jurisdiction (Provincial Highway)
- County Jurisdiction (Arterial Road)
- Arterial
- Collector
- - - Future Collector
- Local
- Municipal Boundary
- Secondary Plan Area
Future arterial and collector road alignments will be determined through the preparation of a Secondary Plan



The **Planning Partnership**

PLAN B Natural Heritage *Plan-It Geographical*



DRAFT



**Official Plan of the
Town of Collingwood
Schedule '7'
Area Specific Policies**

- Area Specific Policies
- Municipal Boundary

The **Planning** Partnership

PLAN **B** Natural Heritage *Plan-It Geographical*